

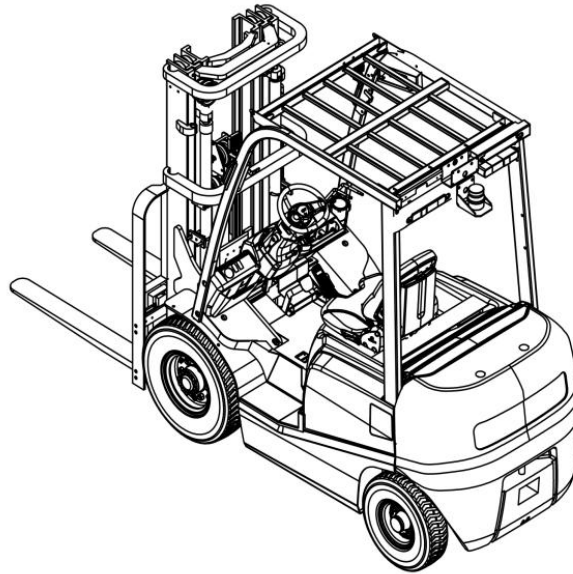


Pneumatic Electric FPB Series

FPB25M-3 / FPB25M-5 / FPB25M-7 / FPB25M-9 / FPB25M-11

FPB25M-13 / FPB25M-15 / FPB25M-17

Parts Catalogue



Original Instruction

2023/10

INTRODUCTION

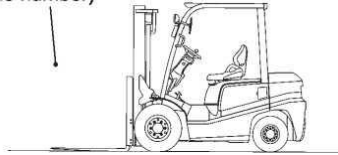
This Parts Catalogue contains the component parts of the FB forklifts FB20P/FB25P/FB30P/FB35P.

How to order parts

When ordering, be sure to specify the model name, specification and serial number (machine number) of your machine, as well as the part number and desired quantity for each part. The machine serial number (machine number) is indicated on the machine name plate.

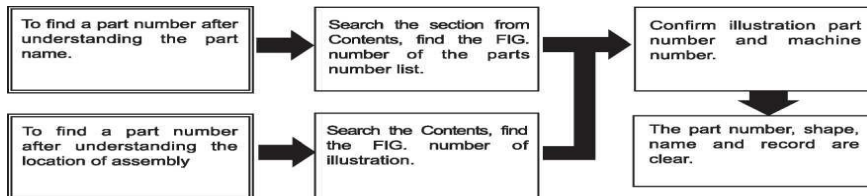
Serial number

(machine number)



Always use "Genuine Parts".

We cannot guarantee any loss or trouble attributable to other parts than ours.



How to use the Parts Catalogue

Abbreviations and symbols

ASSY... Assembled unit.

RH Right-hand when viewed forward on the truck.

LH Left-hand when viewed forward on the truck.

AR Quantity required.

*..... The marketable part set or kit.

T Thickness. +Not illustrated.

..... Not sold separately.

Material and specifications subject to change without notice.

CONTENT

INTRODUCTION	2
CONTENT	1
FIG.1 LITHIUM BATTERY PACK	6
FIG.2 COMBINATION METER	7
FIG.3 COMBINATION SWITCH	8
FIG.4 HEAD LAMP & FRONT COMBINATION LAMP	9
FIG.5 REAR COMBNATION LAMP	10
FIG.6 BACK BUZZER	11
FIG.7 TRAVELLING MOTOR	12
FIG.7 LIST OF PARTS FOR ELECTRIC FORKLIFT TRANSMISSION 1/2	13
FIG.7 LIST OF PARTS FOR ELECTRIC FORKLIFT TRANSMISSION 2/2	14
FIG.8 DIFFERENTIAL GEAR	15
FIG.9 STEERING AXLE ASSY (2T-2.5T) 1/2	16
FIG.9 STEERING AXLE ASSY (2T-2.5T) 2/2	17
FIG.10 STEERING AXLE ASSEMBL (3T-3.5T) 1/2	18
FIG.10 STEERING AXLE ASSEMBL (3T-3.5T) 2/2	19
FIG.11 DRIVE AXLE (2T-2.5T) 1/2	20
FIG.11 DRIVE AXLE (2T-2.5T) 2/2	21
FIG.12 DRIVE AXLE (3T-3.5T) 1/2	22

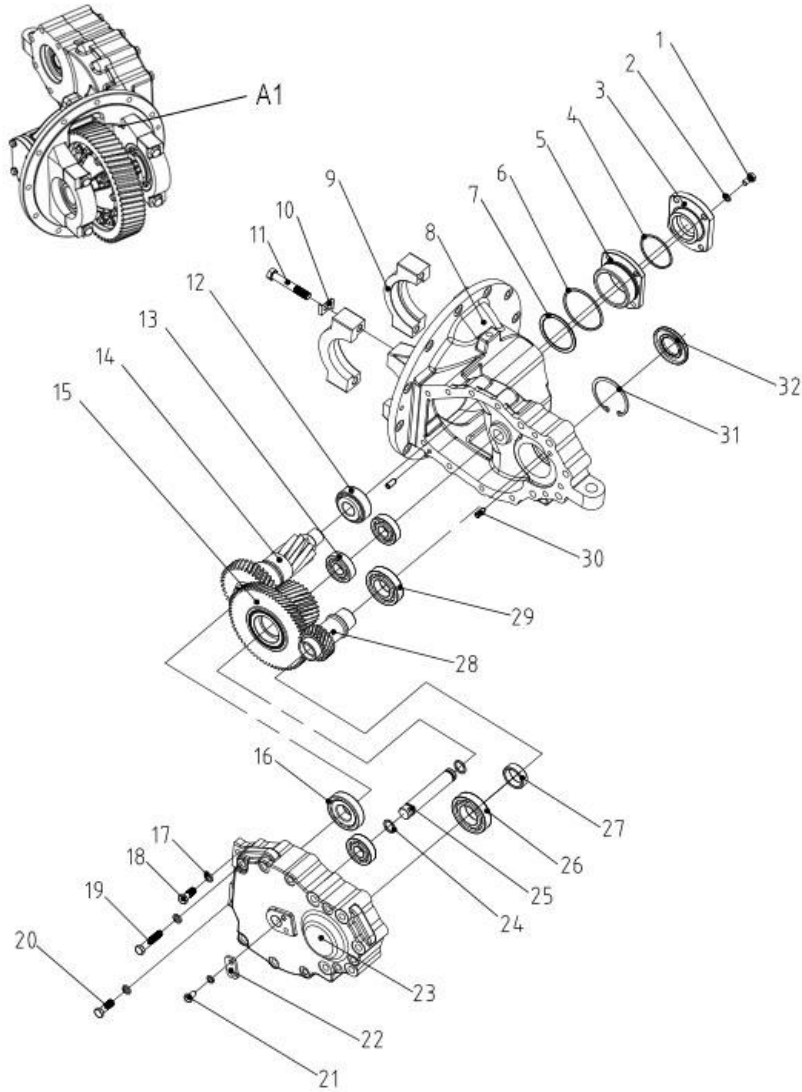
FIG.12 DRIVE AXLE (3T-3.5T) 2/2	23
FIG.13 BRAKE ASSY, LH (2-2.5T) 1/2	24
FIG.13 BRAKE ASSY, LH (2-2.5T) 2/2	25
FIG.14 BRAKE ASSY, RH (2-2.5T) 1/2	26
FIG.14 BRAKE ASSY, RH (2-2.5T) 2/2	27
FIG.15 BRAKE ASSY, LH (3-3.5T) 1/2	28
FIG.15 BRAKE ASSY, LH (3-3.5T) 2/2	29
FIG.16 BRAKE ASSY, RH (3-3.5T) 1/2	30
FIG.16 BRAKE ASSY, RH (3-3.5T) 2/2	31
FIG.17 STEERING WHEEL UNIT	32
FIG.18 ORBITROL	33
FIG.19 ORBITROL FITTING	34
FIG.20 SUPPORTING FRAME	35
FIG.21 HUB NUT	36
FIG.22 FENDER	37
FIG.23 FRONT WHEEL	38
FIG.24 REAR WHEEL	39
FIG.25 OVERHEAD GUARD	40
FIG.26 FRONT LAMP BRACKET	41
FIG.27 ACCELERATE PEDAL (ELECTRIC)	42
FIG.28 FOOT PEDAL	43

FIG.29 FOOT PEDAL CYLINDER.....	44
FIG.30 BRAKE PIPE.....	45
FIG.31 HAND BRAKE.....	46
FIG.32 OIL TANK.....	47
FIG.33 OIL CAP & LEVEL.....	48
FIG.34 AXLE SUPPORT.....	49
FIG.35 COUNTERWEIGHT.....	50
FIG.36 FRONT GUARD.....	51
FIG.37 BONNET 1/2.....	52
FIG.38 BONNET 2/2.....	53
FIG.39 COVER.....	54
FIG.40 BONNET HINGE.....	55
FIG.41 FLOOR BOARD.....	56
FIG.42 STEP & FLOOR MAT.....	57
FIG.43 SIDE COVER.....	58
FIG.44 FRONT COVER.....	59
FIG.45 FRONT SIDE COVER.....	60
FIG.46 SEAT.....	61
FIG.47 PUMP UNIT.....	62
FIG.48 GEAR PUMP.....	63
FIG.49 CONTROL VALVE.....	64

FIG.50 CONTROL VALVE FITTING	65
FIG.51 VALVE CONTROL.....	66
FIG.52 VALVE CONTROL [3SV] 1/2	67
FIG.52 VALVE CONTROL [3SV] 2/2	68
FIG.53 VALVE CONTROL [4SV] 1/2	69
FIG.53 VALVE CONTROL [4SV] 2/2	70
FIG.54 VALVE CONTROL KNOB	71
FIG.55 HYDRAULI FITTINGS	72
FIG.56 HYDRAULIC PIPELINE 1/2	73
FIG.56 HYDRAULIC PIPELINE 2/2	74
FIG.57 HYDRAULIC LINE (MAIN).....	75
FIG.58 TILT CYLINDER.....	76
FIG.59 TILT CYLINDER PIN.....	77
FIG.60 LABEL AND NAMEPLATE	78
FIG.61 FORK.....	79
FIG.62 LIFT BRACKET	80
FIG.63 BACKREST	81
FIG.64 MAST 1/3	82
FIG.64 MAST 2/3	83
FIG.64 MAST 3/3	84
FIG.65 LIFT CYLINDER (FRONT) 1/2	85

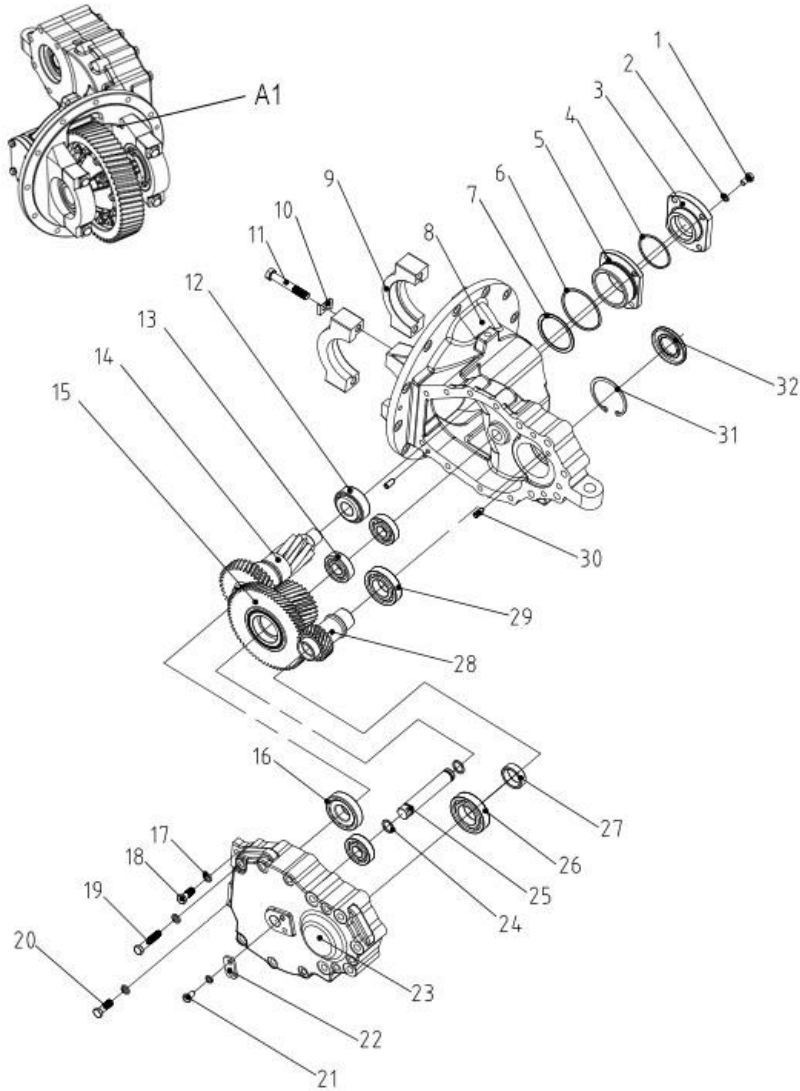
FIG.65 LIFT CYLINDER (FRONT) 2/2	86
FIG.66 LIFT CYLINDER (REAR) 1/3	87
FIG.66 LIFT CYLINDER (REAR) 2/3	88
FIG.67 LIFT CYLINDER (REAR) 3/3	89
FIG.68 MAST PIPING 1/2	90
FIG.68 MAST PIPING 2/2	91
FIG.69 OUTER MAST 1/2	92
FIG.69 OUTER MAST 2/2	93
FIG.70 ELECTRONIC DEVICE	94
FIG.71 QUADRUPLE VALVE SWITCH	95
FIG.72 CABLE	96
FIG.73 ELECTRIC CONTROL SCHEMATIC	97

FIG.8 LIST OF PARTS FOR ELECTRIC FORKLIFT TRANSMISSION 1/2



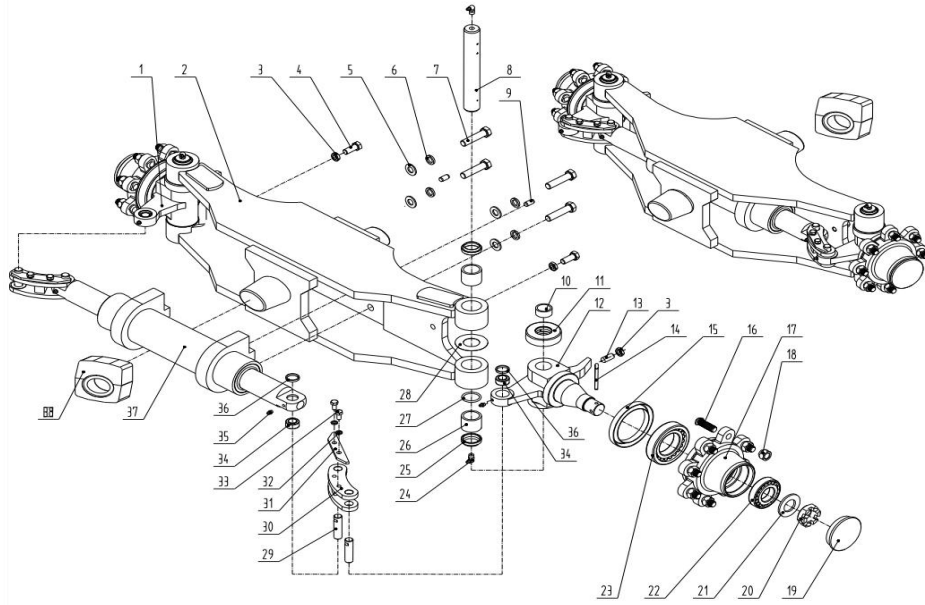
Item No	Part No.	Mark	Description	Req'd	Remarks: Serial No.
A1	BSX-HDCS35A		Gearbox	1	INC. 1~32
1	GB/T 5782		Bolt M10*40	4	
2	GB/T 93		Spring gasket 10	6	
3	HDCS30-01004		Bearing cover II	1	
4	GB/T 3452.1		Type O circle73*2.65	1	
5	HDCS30-01003		Bearing cover I	1	
6	GB/T 3452.1		Type O circle 85*2.65	1	
7	Y30H-09002		Gasket	N	
8	HDCS30-01001-1		Enclosure	1	
9	Y30H-01002		Bearing	2	
10	Y30H-01008		Bearing seat lock plate	4	
11	Y30H-01010		Bearing seat bolt	4	
12	GB/T 297		Tapered roller bearing	1	
13	GB/T 276		Deep groove ball bearing 6305	3	
14	HDCS30-04001		Gear shaft	1	
15	HDCS20-03003-1		Duplex gear	1	
16	GB/T 297		Tapered roller bearing 30307	1	
17	GB/T 93		Spring gasket12	11	
18	GB/T 5786		Bolt M12*1.25*30	1	
19	GB/T 5785		Bolt M12*1.25*100	9	

FIG.8 LIST OF PARTS FOR ELECTRIC FORKLIFT TRANSMISSION 2/2



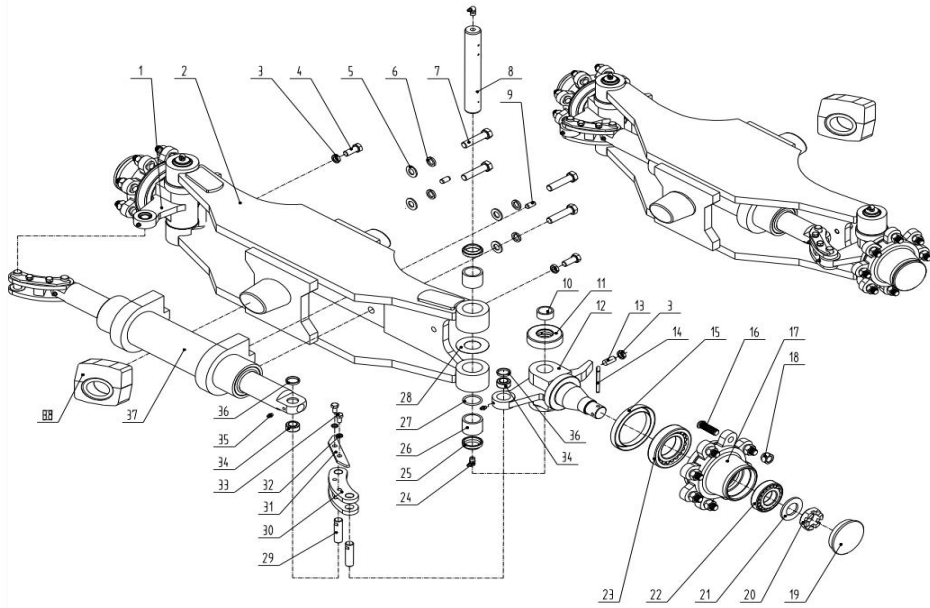
Item No	Part No.	Mark	Description	Req'd	Remarks: Serial No.
20	GB/T 5786		Bolt M12*1.25*40	1	
21	GB/T 5783		Bolt M10*16	2	
22	HDCS20-03001		Baffle	1	
23	HDCS30-01002		Lid	1	
24	GB/T 1235		Type O circle25*2.4	1	
25	HDCS20-03002		Shaft	2	
26	GB/T 276		Deep groove ball bearing 6209	1	
27	HDCS25-02002		Sealing cover	1	
28	HDCS30-02001-2		Input shaft	1	
29	GB/T 276		Deep groove ball bearing 6208	1	
30	GB/T 119.1		Cylindrical pin A10*22	1	
31	GB/T 893.1		Elastic retaining ring for hole 80	2	
32	HDCS30-01005		NOC 40*80*7	1	

FIG.10 STEERING AXLE ASSY (2T-2.5T) 1/2



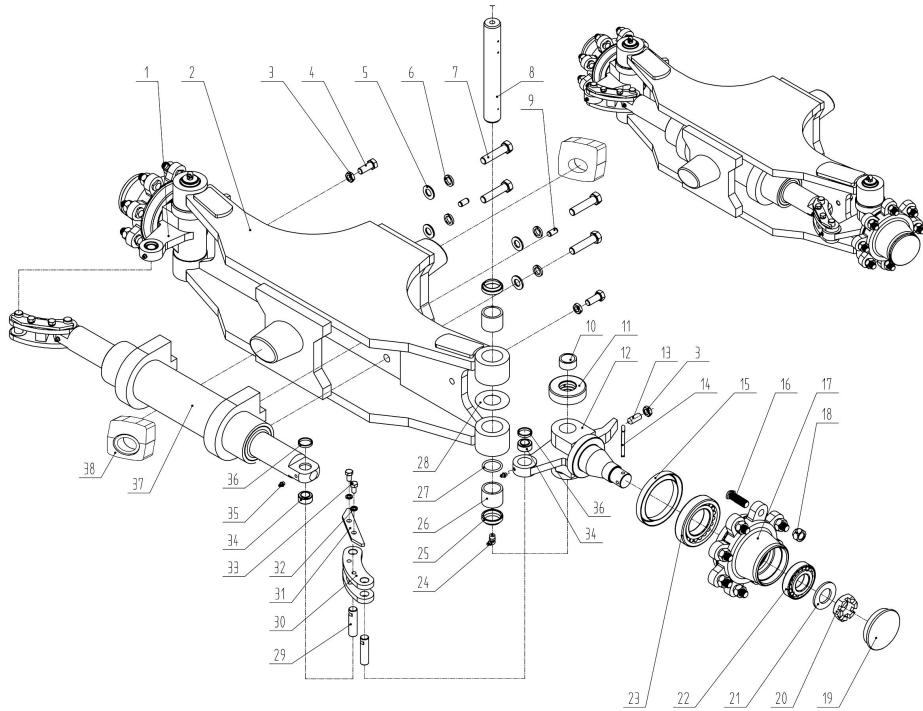
Item No	Part No.	Mark	Description	Req'd	Remarks: Serial No.
A1	H95C4-30001W		Steering axle ASSY	1	INC. 1~38
1	H24c4-32171		Left steering joint ASSY	1	
2	H954c-30301		Steering axle body	1	
3	B4133-00012b		Nut m12 (zinc coated)	4	
4	Bo33o-12040b		Bolt m12*40 (zinc coated)	2	
5	B5050-00014b		Spring washers	4	
6	B5313-00014		Flat mat	4	
7	Bo330-14045b		Bolt m14*45 (zinc coated)	4	
8	A21b4-32222		Knuckle king pin	2	
9	B3130-10020		Pin Ø10*20	1	
10	A21-B4-12001		Bushing	2	
11	Z-198908k		One-way thrust ball bearing198908k	2	
12	H24c4-32181		Right steering joint ASSY	1	
13	B8050-12030b		Inner hexagon taper locking screws	2	
14	B3010-6p350		Cotterpin6.3*50	2	
15	Z6301-08542		OilSal-b85*110*120	2	
16	23654-32041b		Hub bolt (zinc coated)	16	
17	A21b4-32241		Hub	2	
18	23654-34051b		Hub nut (zinc coated)	16	
19	1218-10200		Hub cover	2	

FIG.10 STEERING AXLE ASSY (2T-2.5T) 2/2



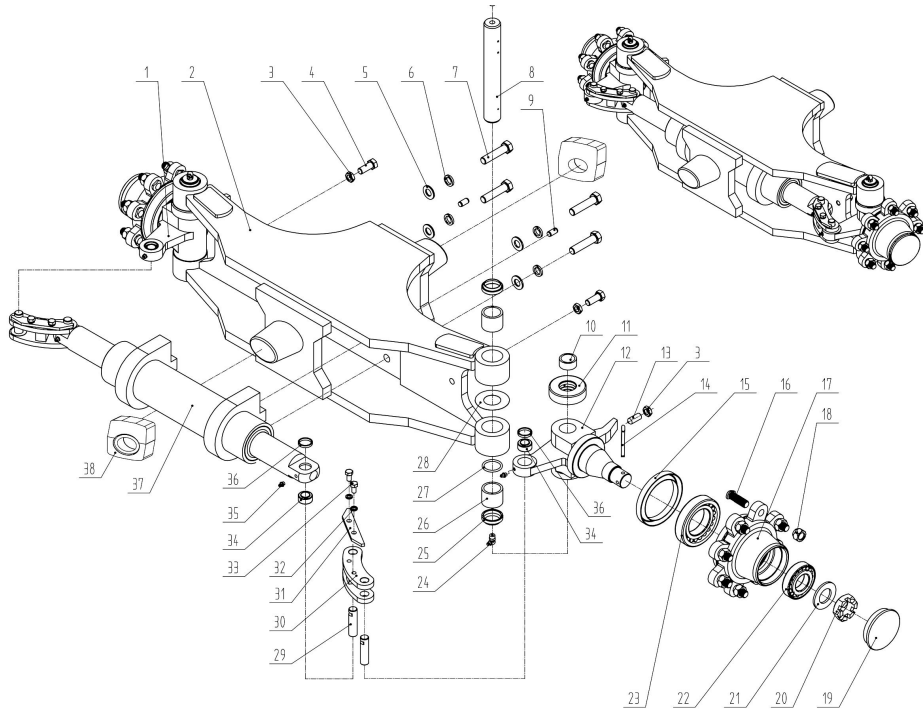
Item No	Part No.	Mark	Description	Req'd	Remarks: Serial No.
20	A21B4-32311		Nut M30*2	2	
21	G27Z4-30711		The gasket-30	2	
22	Z-30207		Tapered roller bearing 30207	2	
23	Z-30211		Tapered roller bearing 30211	2	
24	Q701b90		Elbow grease nozzle	4	
25	23654-32081		Oil Sal	4	
26	Z-943/32		Needle roller bearing Ø32*Ø40*32	4	
27	23654-32161		type O circle	4	
28	22214-30321		Steering gear adjustment pad	2	
29	A21b4-32261ab		Connecting rod pin (zinc coated)	2	
30	A21B4-32081B		Connecting rod (zinc coated)	2	
31	A21B4-32300B		Baffle (zinc coated)	4	
32	B5050-00008b		Spring washers 8 (zinc coated)	4	
33	B0330-08016b		Bolt M8*16 (zinc coated)	4	
34	Z-GE16ES		Joint bearing GF16FS	4	
35	Q700B06		Straight grease nipple M6	4	
36	H24c4-12003		Bushing	4	
37	H24C4-50402CQ		Steering cylinder ASSY	1	
38	H24N4-32451		Shock pad	2	

FIG.11 STEERING AXLE ASSEMBL (3T-3.5T) 1/2



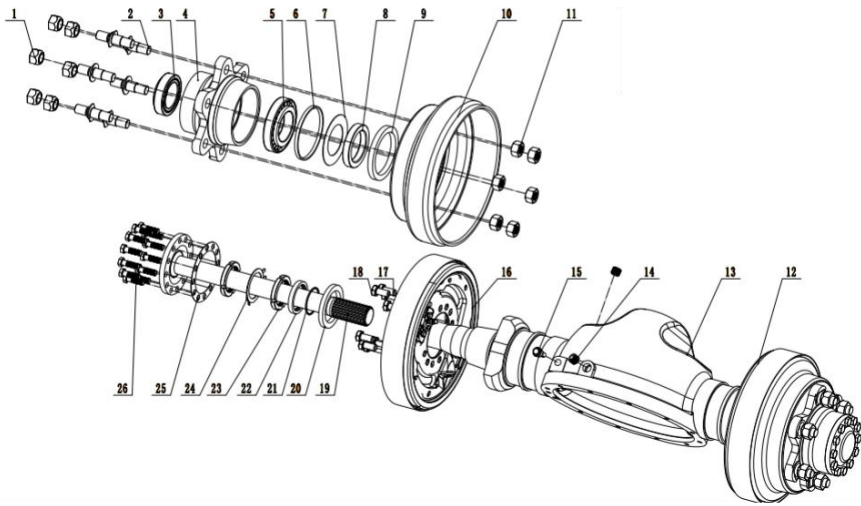
Item No	Part No.	Mark	Description	Req'd	Remarks: Serial No.
A1	H24N4-30002		Steering axle ASSY	1	INC. 1~38
1	H24C4-32171		Steering knuckle ASSY, LH	1	
2	H24N4-30302		Steering axle ASSY	1	
3	B4133-00012B		Nut M12	4	
4	B0330-12040B		Bolt M12x40	2	
5	B5050-00014B		Spring washer 14	4	
6	B5313-00014		Washer 14	4	
7	B0330-14045B		Bolt M14x45	4	
8	A21B4-32222		King pin	2	
9	B3130-10020		Pin Ø10*20	1	
10	A21B4-12001		Bushing	2	
11	Z-198908K		One-way thrust ball bearing 198908K	2	
12	H24C4-32181		Steering knuckle ASSY, RH	1	
13	B8050-12030B		Hexagon socket set screw	2	
14	B3010-6P350		cotter pin	2	
15	Z6301-08524		Oil seal B85*110*120	2	
16	23654-32041B		Bolt	16	
17	A21B4-32311		Hub	2	
18	23654-34051B		Nut	16	
19	1218-10200		Hub cap	2	

FIG.11 STEERING AXLE ASSEMBL (3T-3.5T) 2/2



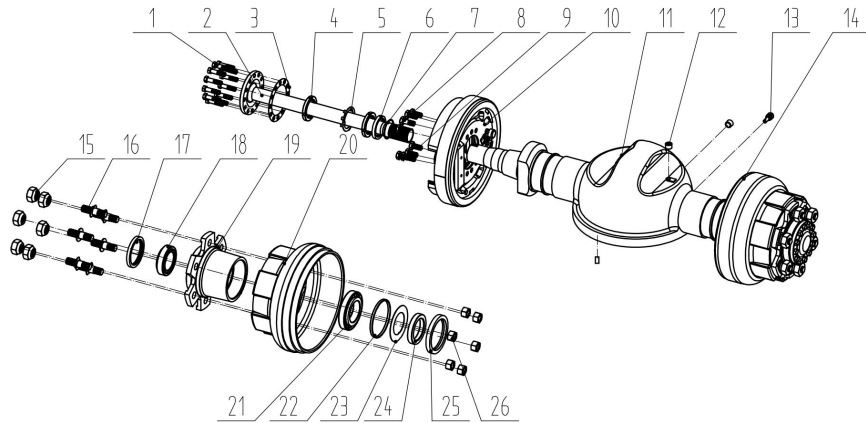
Item No	Part No.	Mark	Description	Req'd	Remarks: Serial No.
20	A21B4-32311		Nut M30x2	2	
21	G27Z4-30711		Washer 30	2	
22	Z-30207		Bearing 30207	2	
23	Z-30211		Bearing 30211	2	
24	Q701B90		Elbow grease nipple	4	
25	23654-32081		Oil Seal	4	
26	Z-943/32		Bearing Ø32*Ø40*32	4	
27	23654-32161		O ring	2	
28	22214-30321		Washer	2	
29	A21B4-32261AB		Pin	4	
30	A21B4-32081B		Connecting plate	2	
31	A21B4-30300B		Plate	2	
32	B5050-00008B		Spring washer 8	4	
33	B0330-08016B		bolt M8x16	4	
34	A-GE16ES		Radial spherical plain bearing GE16ES	4	
35	Q700B06		Straight grease nipple M6	4	
36	H24C4-12003		Bushing	4	
37	H24C4-50402CQ		Steering cylinder ASSY	1	
38	H24N4-32451		Cushion block	2	

FIG.12 DRIVE AXLE (2T-2.5T) 1/2



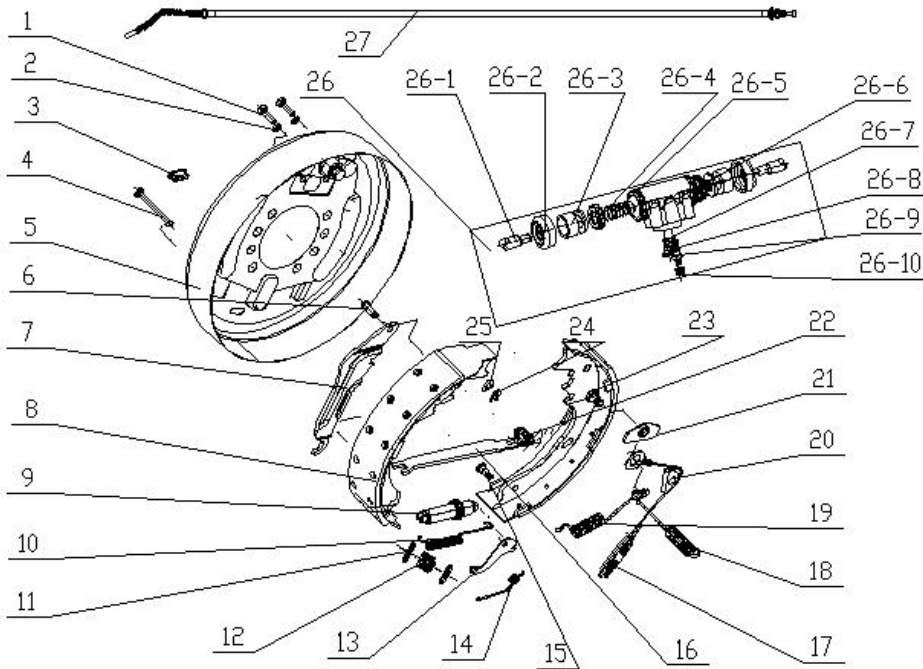
Item No	Part No.	Mark	Description	Req'd	Remarks: Serial No.
A1	HRA22-J3001		Driver axle	1	INC. 1~26
1	24354-32311		Tapered nut	12	
2	24353-72001		Column bolt	12	
3	Z-33012		Bearing Z-33012	4	
4	A2013-02011jxx		Hub	2	
5	Z30214		Bearing-30214	2	
6	22493-0020G		Spare pad Ø125*Ø119*7.5	4	
7	22493-0030G		Oil deflector Ø118*Ø72.5*1	2	
8	24453-0212g		Oil seal retainer	2	
9	Z6351-01004		Oil seal Ø100*Ø125*12	2	
10	22673-02031		Brake hub	2	
11	B4223-00020		Nut M20*1.5	12	
12	Ref-00056r		Right brake ASSY	1	
13	A22a3-02041a		Drive axle housing	1	
14	22193-03001		Plug	3	
15	90106-65690		Vent plug ASSY	1	
16	Ref-00056l		Left brake	1	
17	25953-72001		Nut M14*1.5*38	4	
18	A22A3-02051		Nut M14*1.5*30	12	
19	A2013-02021		Half shaft	2	

FIG.13 DRIVE AXLE (3T-3.5T) 1/2



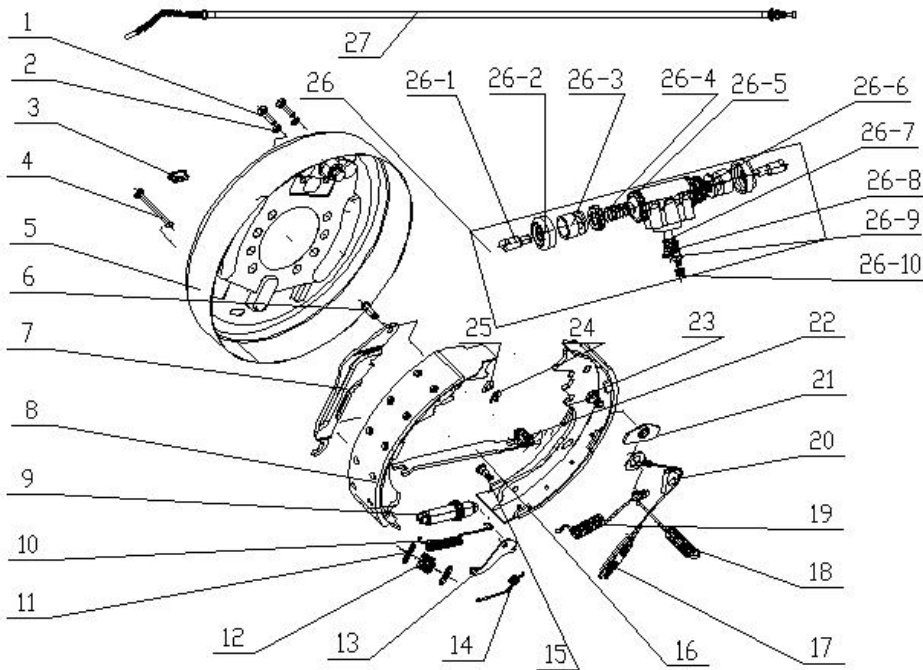
Item No	Part No.	Mark	Description	Req'd	Remarks: Serial No.
A1	H24N4-30002		Driver axle	1	INC. 1~26
1	24453-02061B		Bolt	24	
2	A22J3-02011		Shaft	2	
3	A22A3-02031		Seal gasket	2	
4	25555-00004		Bolt M58*2	4	
5	25555-00006		Washer	2	
6	25555-00007		Bushing Ø60*Ø75*10	2	
7	25555-00008		O ring Ø59.6*Ø2.4	2	
8	25953-72001		Bolt	4	
9	A22A3-02051		Bolt	12	
10	AQ-Q03E5-1520R		Brake ASSY, RH	1	
11	A22J3-02021A		Axle Housing	1	
12	22193-03001		Block	3	
13	90106-65690		Air vent	1	
14	24433-70411		Brake ASSY, LH	1	
15	23913-02041B		Nut	12	
16	25303-02102B		Bolt	12	
17	25555-00009		Seal Ø75*Ø100*10	2	
18	Z-33012		Bearing 33012	2	
19	25555-00003		Hub	2	

FIG.14 BRAKE ASSY, LH (2-2.5T) 1/2



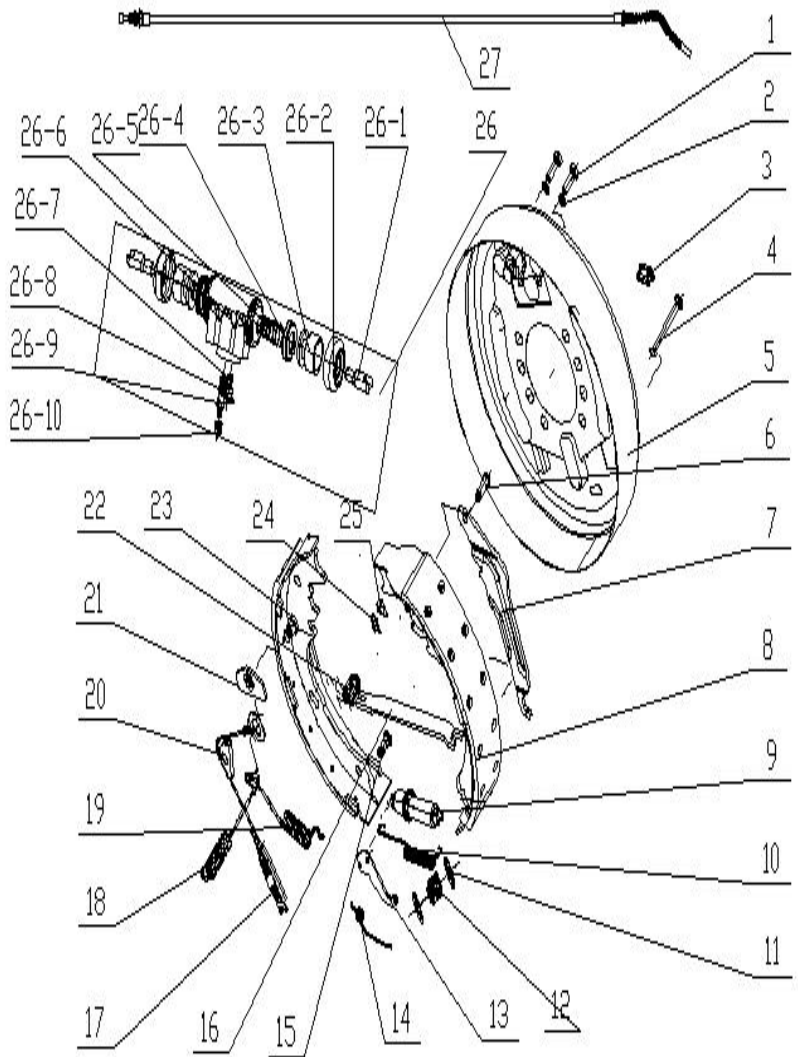
Item No	Part No.	Mark	Description	Req'd	Remarks: Serial No.
A1	Ref-00056I		Left brake ASSY	1	INC. 1~26
1	GB5782-86		Bolt, M8*16-6g	2	
2	GB93-86		Spring washer	2	
3	24433-70040G		Plug	1	
4	24433-70010G-TLF		Compression spring tie rod	2	
5	FH31062-010L		Brake base plate ASSY, LH	1	
6	22673-72231		Brake lever pin	1	
7	23653-72071G-L		Brake lever, LH	1	
8	FH31062-020		Brake shoe	1	
9	24433-74000G-TLFL		Gap adjuster ASSY, LH	1	
10	24433-70050G		Tension spring	1	
11	24433-70020G		Compression spring cup	4	
12	24433-70030G		Compression spring	2	
13	24433-70100G-L		Pawl, LH	1	
14	24433-70090G-L		Torsion spring, LH	1	
15	24433-70110G		Torsion spring pin	1	
16	23653-72081		Brake push rod	1	
17	24433-73000G-FH		Spring cable device	1	
18	FH31063NS-002L		Return spring, rear, LH	1	
19	FH31063NS-001L		Return spring, front, LH	1	

FIG.14 BRAKE ASSY, LH (2-2.5T) 2/2



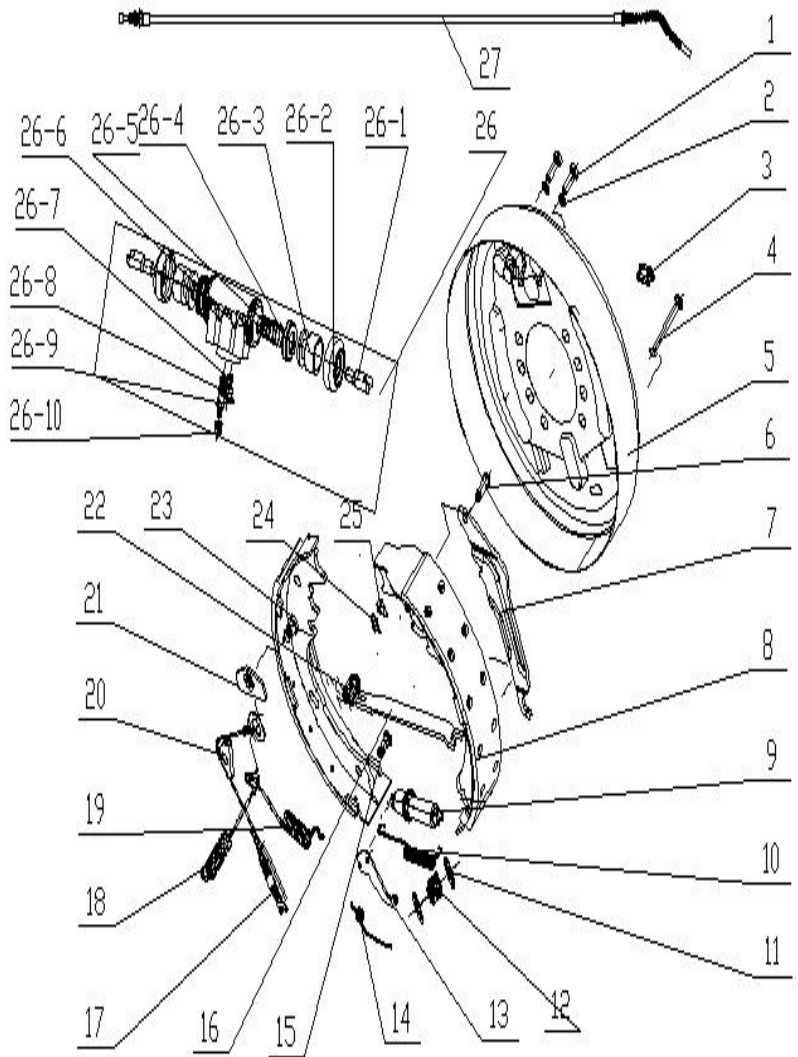
Item No	Part No.	Mark	Description	Req'd	Remarks: Serial No.
20	24433-70081G		Guide block	1	
21	24433-70060G		Guide plate	1	
22	23673-72391		Spring	1	
23	FH31062-021L		Brake shoe with friction plate and spring pin	1	
24	24433-70170G		Rod pin retaining ring	1	
25	24433-70160G		Spring washer	1	
26	22673-72041-L		Wheel cylinder ASSY, LH	1	INC. 26-1~26-10
26-1	33673-72111		Piston rod	1	
26-2	33673-72101		Boot	2	
26-3	22673-72071		Piston	2	
26-4	22673-72081		Cup	2	
26-5	22673-72091		Spring	1	
26-6	22673-72061-L		Cylinder body, LH	1	
26-7	24433-76070G		Oil plug	1	
26-8	24433-76080G		Thread plug	1	
26-9	24433-76090G		Air vent screw	1	
26-10	24433-76100G		Air vent screw cap	1	
27	ZDQLS-1230		Brake cable ASSY, LH	1	

FIG.15 BRAKE ASSY, RH (2-2.5T) 1/2



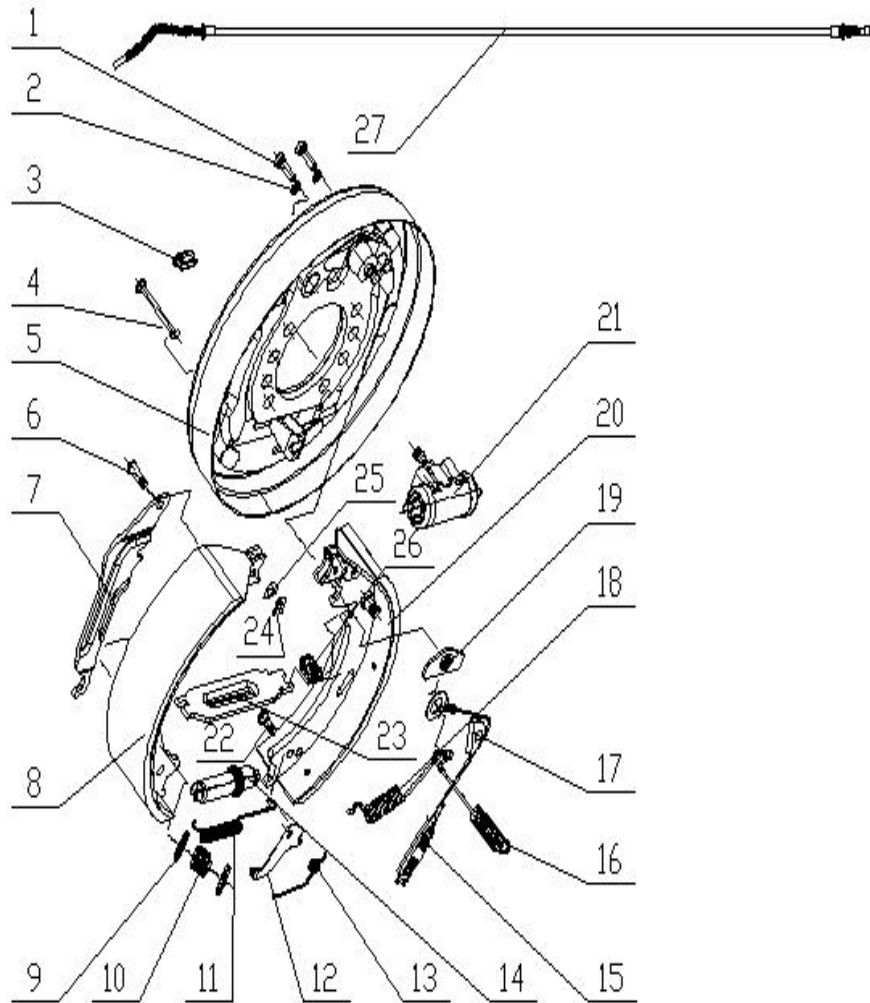
Item No	Part No.	Mark	Description	Req'd	Remarks: Serial No.
A1	Ref-00056r		Right brake ASSY	1	INC. 1-26
1	GB5782-86		Bolt, M8*16-6g	2	
2	GB93-86		Spring washer	2	
3	24433-70040G		Plug	1	
4	24433-70010G-TLF		Compression spring tie rod	2	
5	FH31062-010R		Brake base plate ASSY, RH	1	
6	22673-72231		Brake lever pin	1	
7	23653-72071G-R		Brake lever, RH	1	
8	FH31062-020		Brake shoe	1	
9	24433-74000G-TLFR		Gap adjuster ASSY, RH	1	
10	24433-70050G		Tension spring	1	
11	24433-70020G		Compression spring cup	4	
12	24433-70030G		Compression spring	2	
13	24433-70100G-R		Pawl, RH	1	
14	24433-70090G-R		Torsion spring, RH	1	
15	24433-70110G		Torsion spring pin	1	
16	23653-72081		Brake push rod	1	
17	24433-73000G-FH		Spring cable device	1	
18	FH31063NS-002R		Return spring, rear, RH	1	
19	FH31063NS-001R		Return spring, front, RH	1	

FIG.15 BRAKE ASSY, RH (2-2.5T) 2/2



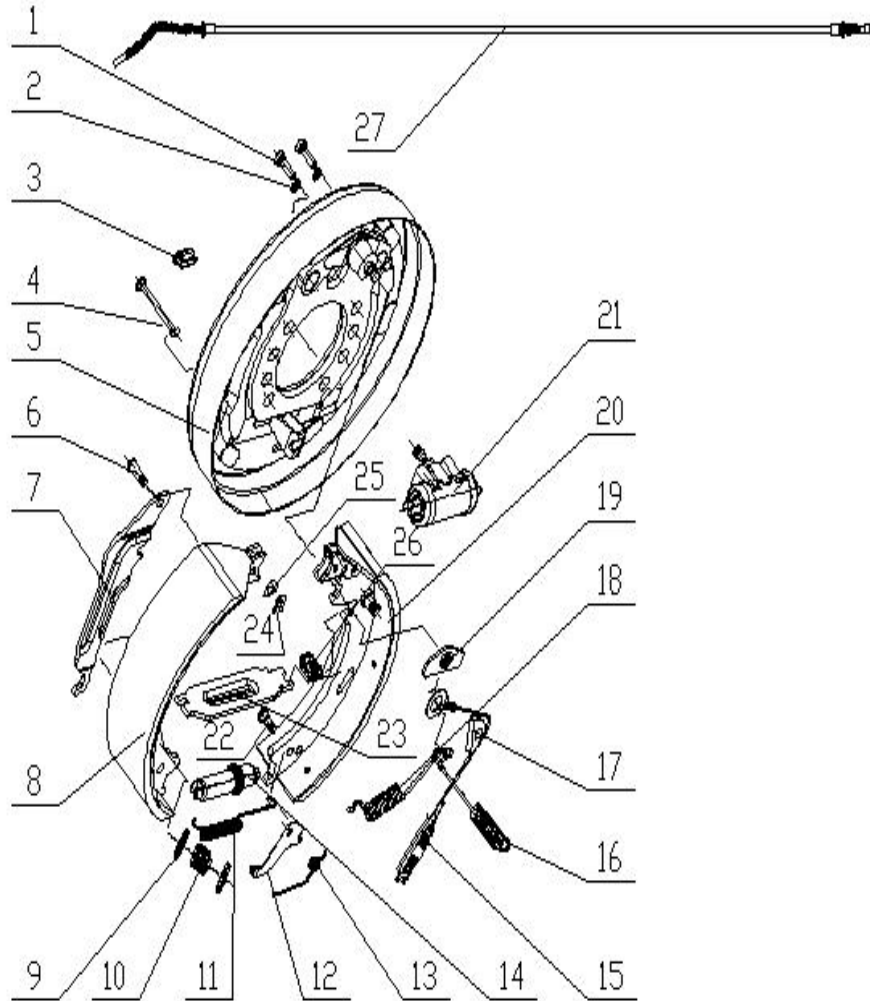
Item No	Part No.	Mark	Description	Req'd	Remarks: Serial No.
20	24433-70081G		Return spring, front, RH	1	
21	24433-70060G		Guide block	1	
22	23673-72391		Guide plate	1	
23	FH31062-021R		Spring	1	
24	24433-70170G		Brake shoe with friction plate and spring pin	1	
25	24433-70160G		Rod pin retaining ring	1	
26	22673-72041-R		Wheel cylinder ASSY, RH	1	INC.26-1~26-10
26-1	33673-72111		Piston rod	1	
26-2	33673-72101		Boot	2	
26-3	22673-72071		Piston	2	
26-4	22673-72081		Cup	2	
26-5	22673-72091		Spring	1	
26-6	22673-72061-R		Cylinder body, RH	1	
26-7	24433-76070G		Oil plug	1	
26-8	24433-76080G		Thread plug	1	
26-9	24433-76090G		Air vent screw	1	
26-10	24433-76100G		Air vent screw cap	1	
27	ZDQLS-1250		Brake cable ASSY, RH	1	

FIG.16 BRAKE ASSY, LH (3-3.5T) 1/2



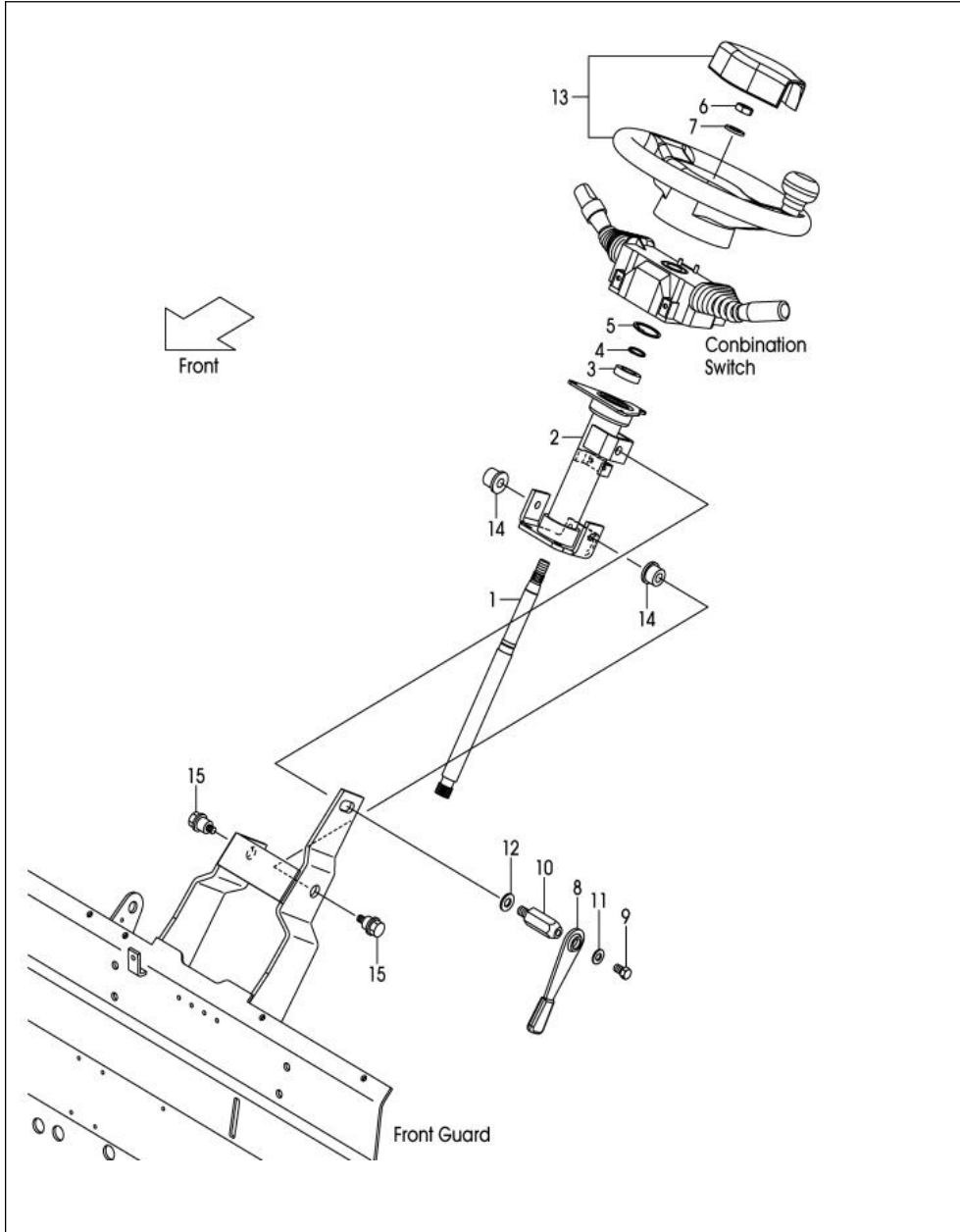
Item No	Part No.	Mark	Description	Req'd	Remarks: Serial No.
A1	24433-70411		Brake ASSY, LH	1	INC.1~26
1	GB21-76		Bolt M8*1.25*25-6g	2	
2	GB91-76		Spring washer	2	
3	24433-70040G		Plug	1	
4	24433-70010G		Compression spring tie rod	2	
5	24433-72000G-L		Brake base plate ASSY, LH	1	
6	24433-70150G		Lever pin	1	
7	24433-70140G-L		Brake lever, LH	1	
8	24433-75000G		Brake shoe	1	
9	24433-70020G		Compression spring cup	4	
10	24433-70030G		Compression spring	2	
11	24433-70050G		Tension spring	1	
12	24433-70100G-L		Pawl, LH	1	
13	24433-70090G-L		Torsion spring, LH	1	
14	24433-74000G-L		Gap adjuster ASSY, LH	1	
15	24433-73000G		Spring cable device	1	
16	24433-70071G-L		Return spring, rear, LH	1	
17	24433-70081G		Guide block	1	
18	24433-70070G-L		Return spring, RH	1	
19	24433-70060G		Guide plate	1	

FIG.17 BRAKE ASSY, RH (3-3.5T) 1/2



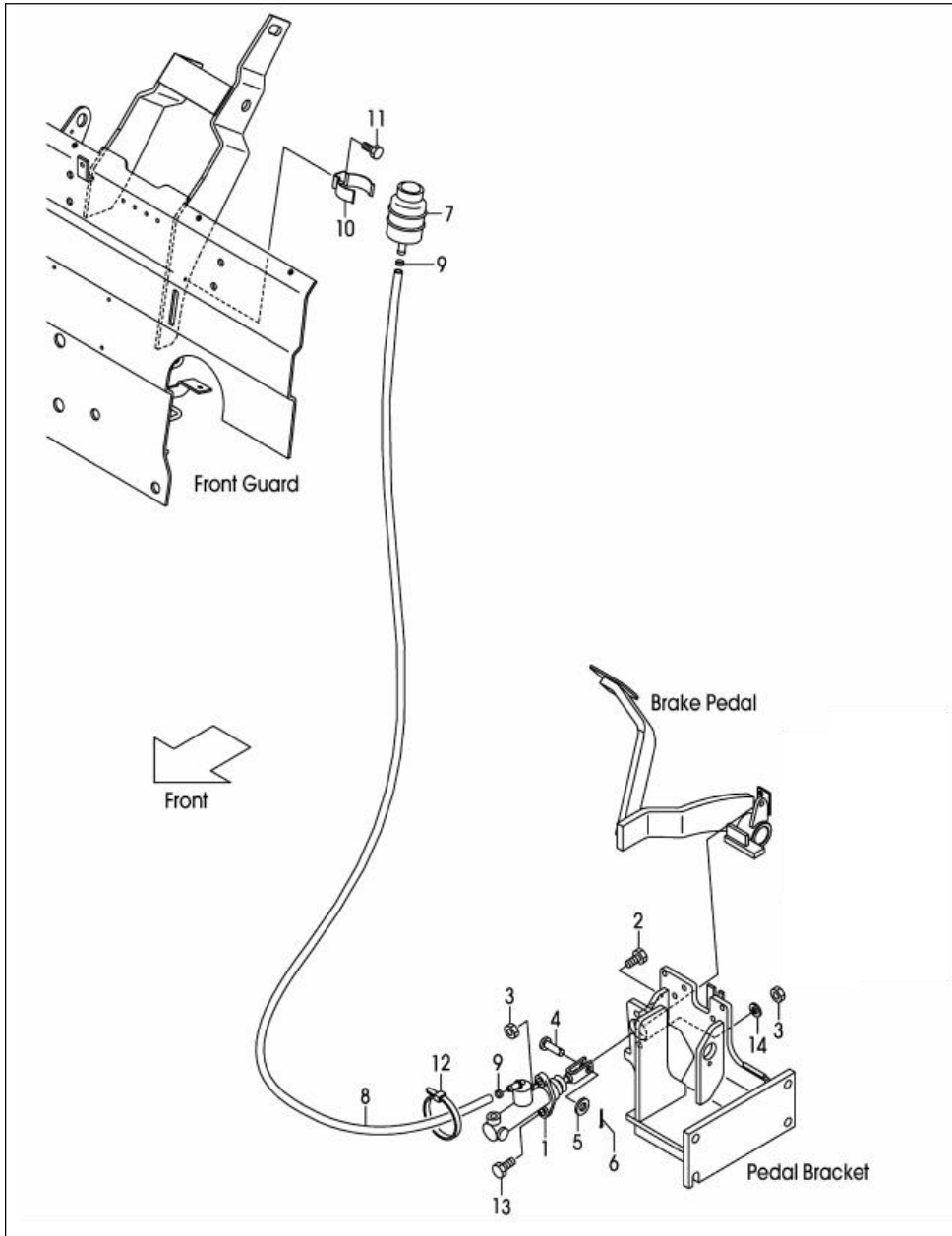
Item No	Part No.	Mark	Description	Req'd	Remarks: Serial No.
A1	AQ-Q03E5-1520R		Brake ASSY, RH	1	INC. 1~26
1	GB21-76		Bolt, M8*1.25*25-6g	2	
2	GB91-76		Spring washer	2	
3	24433-70040G		Plug	1	
4	24433-70010G		Compression spring tie rod	2	
5	24433-72000G-R		Brake base plate ASSY, RH	1	
6	24433-70150G		Lever pin	1	
7	24433-70140G-R		Brake lever, RH	1	
8	24433-75000G		Brake shoe	1	
9	24433-70020G		Compression spring cup	4	
10	24433-70030G		Compression spring	2	
11	24433-70050G		Tension spring	1	
12	24433-70100G-R		Pawl, RH	1	
13	24433-70090G-R		Torsion spring, RH	1	
14	24433-74000G-R		Gap adjuster ASSY, RH	1	
15	24433-73000G		Spring cable device	1	
16	24433-70071G-R		Return spring, rear, RH	1	
17	24433-70081G		Guide block	1	
18	24433-70070G-R		Return spring, RH	1	
19	24433-70060G		Guide plate	1	

FIG.18 STEERING WHEEL UNIT



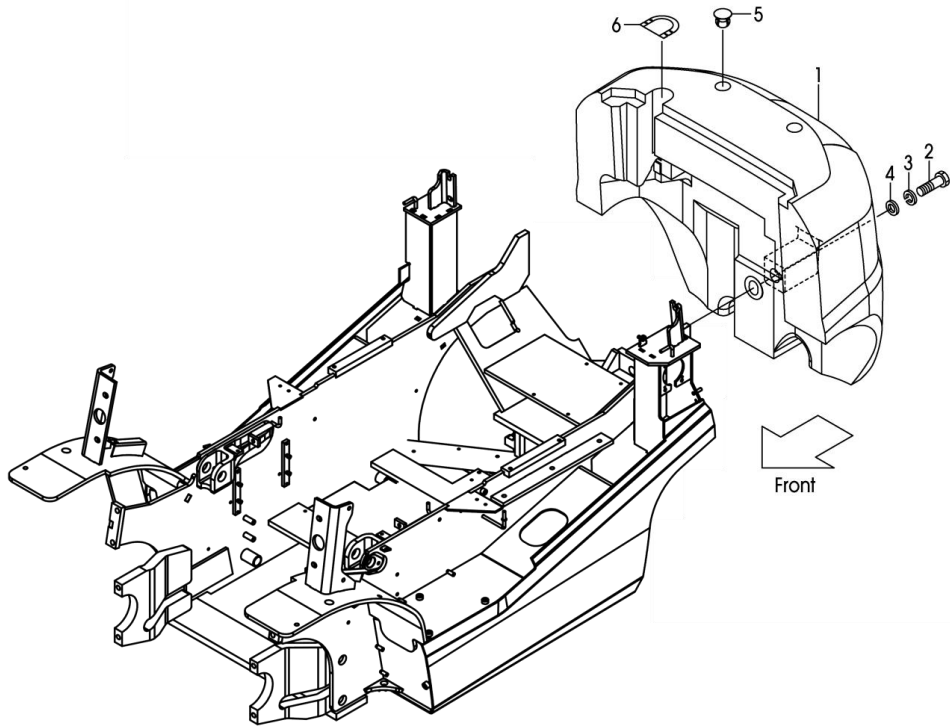
Item No	Part No.	Mark	Description	Req'd	Remarks: Serial No.
1	NO PART NO.	#	Steering shaft	1	
2	NO PART NO.	#	Steering column tube	1	
3	03024-06904		Ball bearing	1	
4	C91J4-12211		Snap ring	1	
5	02110-00037		Snap ring	1	
6	01402-10014		Nut	1	
7	02000-00014		Washer	1	
8	239A4-12411		Lever	1	
9	239A4-12441		Bolt	1	
10	239A4-12431		Lock Bolt	1	
11	214A4-12161		Washer	1	
12	02000-00012		Washer	1	
13	22N54-10201a		Steering Wheel	1	
14	WL-GB9316		Bushing M16	2	
15	C0F01-22301		Bolt	2	
1-5	249M4-10251		Steering column	1	
8-12	239A4-12402		Locking handle ASSY	1	

FIG.30 FOOT PEDAL CYLINDER



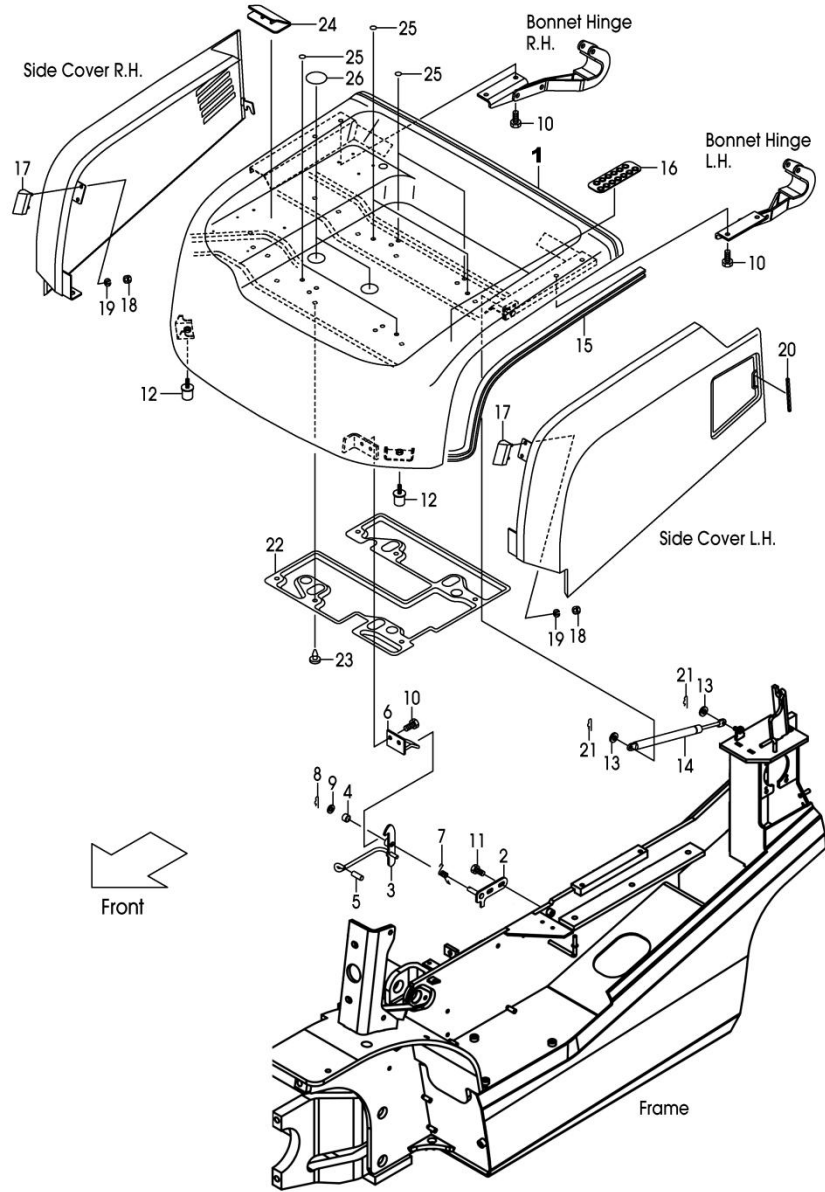
Item No	Part No.	Mark	Description	Req'd	Remarks: Serial No.
1	CT27045-40302		Master Cylinder	1	
2	01184-10030		Bolt	1	
3	01400-00010		Nut	2	
4	02262-08025		Clevis pin	1	
5	02000-00008		Washer	1	
6	02200-02020		Cotter pin	1	
7	CT23775-42101		Tank	1	
8	22655-42591		Hose	1	
9	25595-42491		Band	2	
10	224G5-42061		Hose Clip	1	
11	01183-06010		Bolt Ø5X20	1	
12	04913-11100		Band	1	
13	01100-10030		Bolt	1	
14	02010-00010		Washer	1	

FIG.36 COUNTERWEIGHT



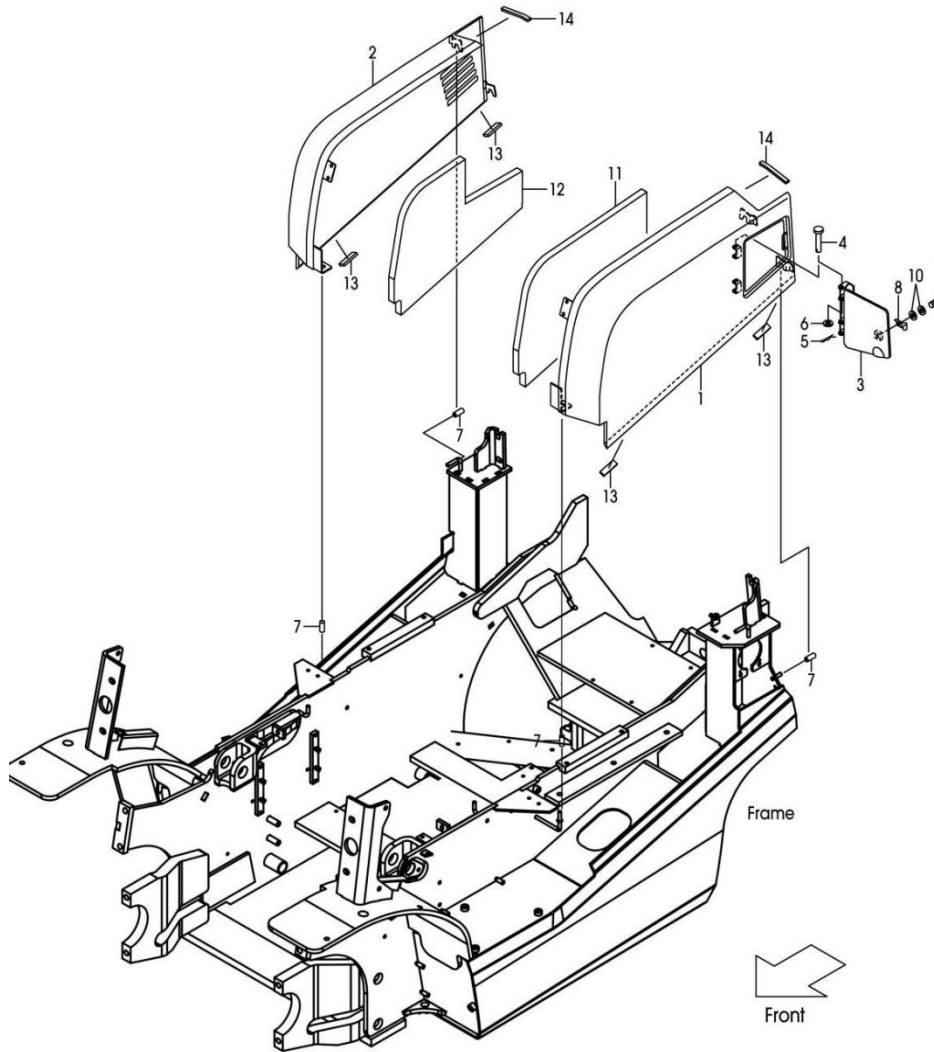
Item No	Part No.	Mark	Description	Req'd	Remarks: Serial No.
1	22N56-30100	#	Counterweight(2T)	1	
	22N56-30101		Counterweight(2.5T)	1	
	22N96-30102		Counterweight(3T)	1	
	22N96-30103		Counterweight(3.5T)	1	
2	01110-30150		Bolt (2T-2.5T)	1	
	01110-36200		Bolt (3T-3.5T)	1	
3	02010-00030		Washer (2T-2.5T)	1	
	02010-00036		Washer (3T-3.5T)	1	
4	234A6-32001		Washer (2T-2.5T)	1	
	25786-32031		Washer (3T-3.5T)	1	
5	A24K6-30211		Cap	2	
6	CT22N56-32211		Cover	1	

FIG.38 BONNET 1/2



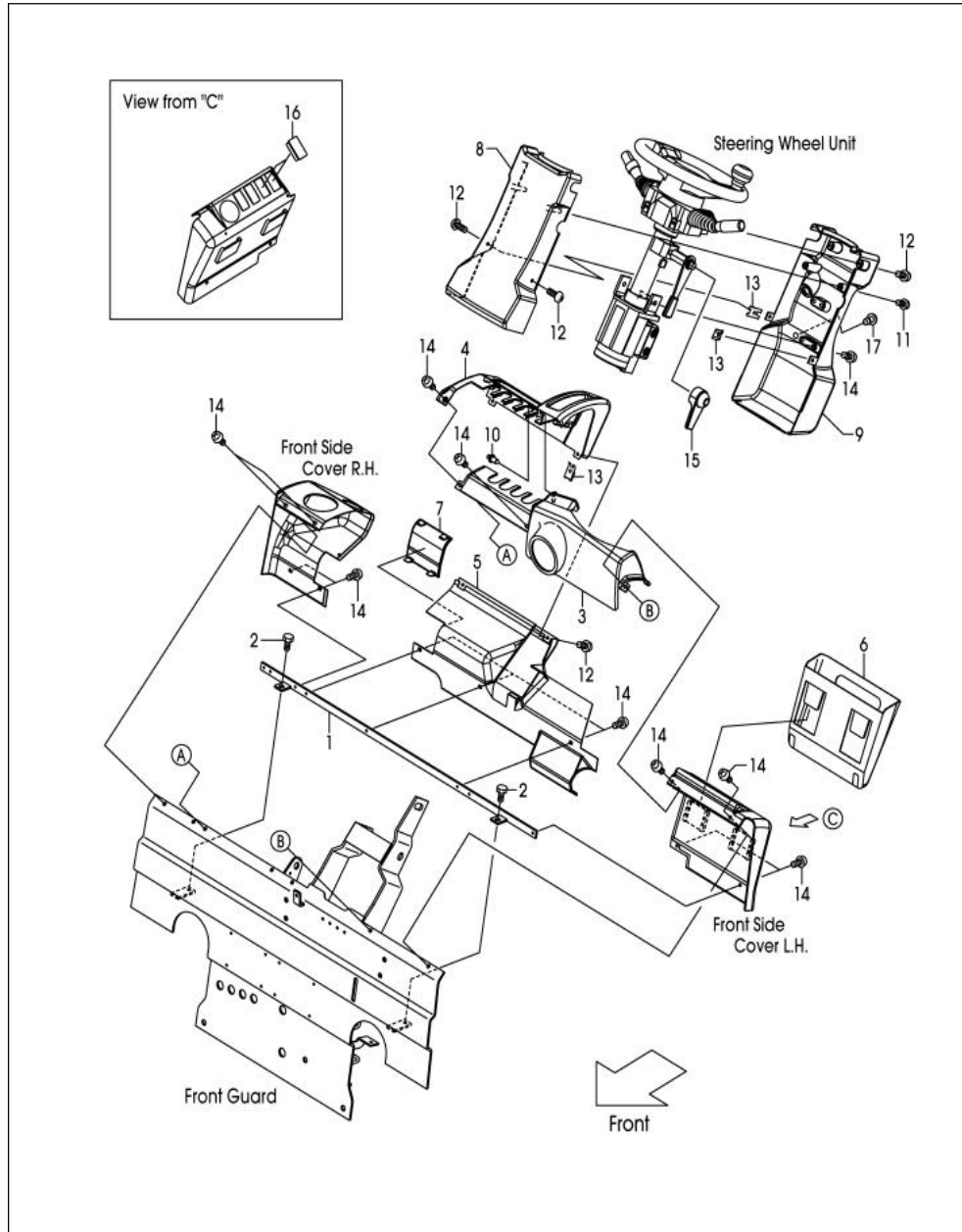
Item No	Part No.	Mark	Description	Req'd	Remarks: Serial No.
1	2CN16-40401		Hood ASSY	1	
2	NO PART NO.	#	Bonnet lock bracket	1	
3	NO PART NO.	#	Latch	1	
4	23655-22101		Bushing	1	
5	216G6-52291		Cap	10	
6	216G6-42451		Hook	1	
7	216G6-42481		Spring	1	
8	216H5-42141		Snap pin	1	
9	02000-00010		Washer	1	
10	01183-08016		Bolt	6	
11	01185-08016		Bolt	2	
12	22N56-43051		Rubber stopper	2	
13	02000-00008		Washer	2	
14	GASSPRING		Gas spring	1	
15	22N56-40361		Bonnet seal	1	
16	22N57-42201		Rubber	1	
17	22N56-43281		Bonnet stopper	2	
18	01400-00006		Nut	4	
19	02010-00006		Washer	4	
20	22N56-43271		Rubber	1	

FIG.43 SIDE COVER



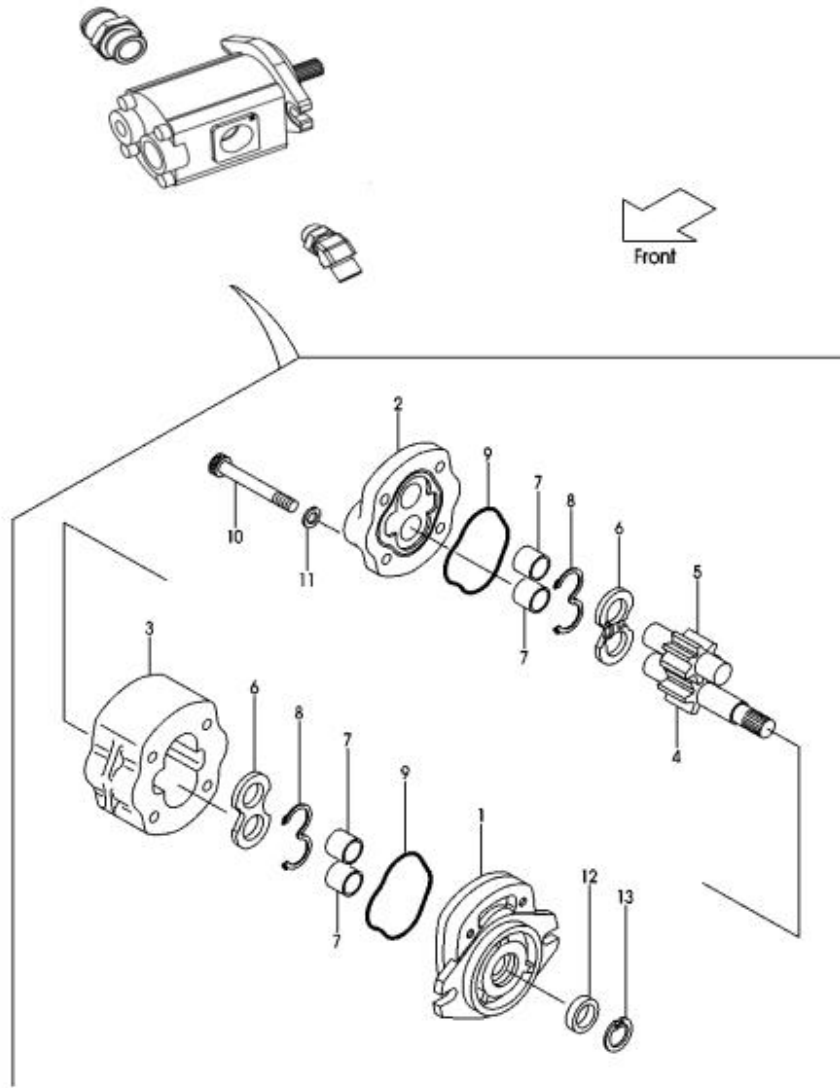
Item No	Part No.	Mark	Description	Req'd	Remarks: Serial No.
1-3	2CN16-40251		Side cover	1	
1	22N56-40252		Side cover, LH	1	
2	2CN16-40261		Side Cover, RH	1	
3	22N56-40272		Charging door	1	
4	02262-08045		Clevis pin	2	
5	216H3-92171		Snap pin	2	
6	02000-00008		Washer	2	
7	216G6-52291		Rubber cap	6	
8	22N56-43252		Leap spring	1	
9	01183-08012		Bolt	1	
10	02000-00008		Washer	2	
11	22N56-43481		Rubber	4	
12	243C6-42821		Edging, L=100	2	

FIG.44 FRONT COVER



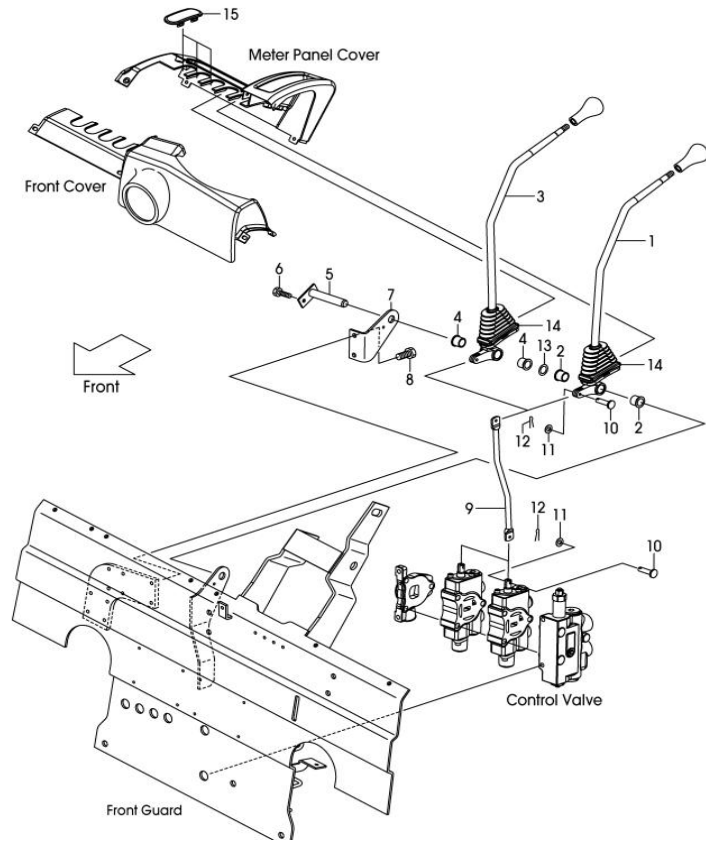
Item No	Part No.	Mark	Description	Req'd	Remarks: Serial No.
1	20A76-42862		Cover bracket	1	
2	01185-08016		Bolt	2	
3	22N56-42741		Front Cover	1	
4	22N56-42701		Meter penal cover	1	
5	22N56-42731		Lower cover	1	
6	22N56-42751		Pocket	1	
7	22N56-42771		Lever cover	1	
8	22N54-12321		Front cover	1	
9	22N54-12311		Rear cover	1	
10	22N56-42791		Push rivet	1	
11	222A2-42031		Screw	2	
12	209K2-43001		Screw	6	
13	281E6-42521		But	4	
14	225R6-42031		Screw	10	
15	22N54-12201		Tilt lock cover	1	
16	YBG173		Meter housing	2	
17	281E6-42571		Hole plug	1	

FIG.48 GEAR PUMP



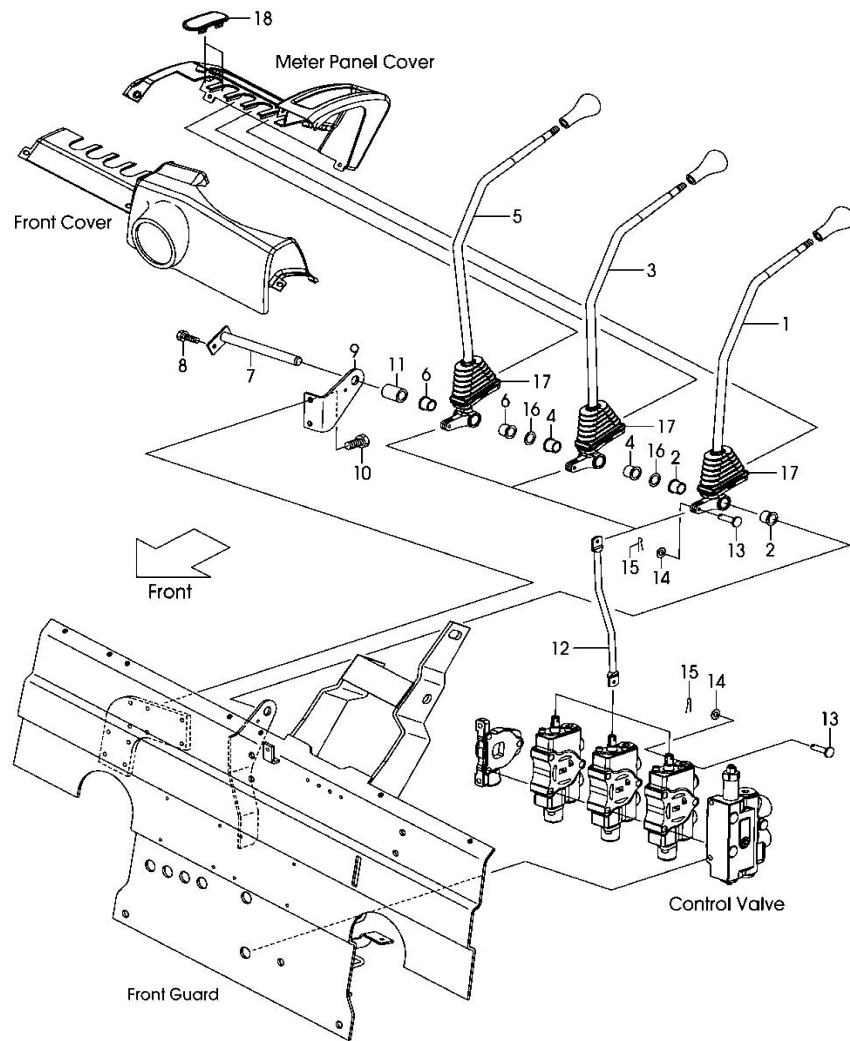
Item No	Part No.	Mark	Description	Req'd	Remarks: Serial No.
A1	TMG1C23A1H7-R		Gear pump ASSY	1	INC.1~13
901	BN-404-10236		Repair kit	1	INC. 8, 9,12,13
1	NO PART NO.		Front cover	1	
2	NO PART NO.		Rear cover	1	
3	NO PART NO.		Pump body	1	
4	NO PART NO.		Drive gear	1	
5	NO PART NO.		Driven gear	1	
6	NO PART NO.		Side Plate	2	
7	NO PART NO.		Bushing	4	
8	BN-402-12086		Gasket	2	
9	BN-402-12754		Gasket	2	
10	NO PART NO.		Bolt	4	
11	NO PART NO.		Washer	4	
12	BN-404-0014-15		Oil seal	1	
13	BN-404-00005-02		Snap ring	1	

FIG.51 VALVE CONTROL



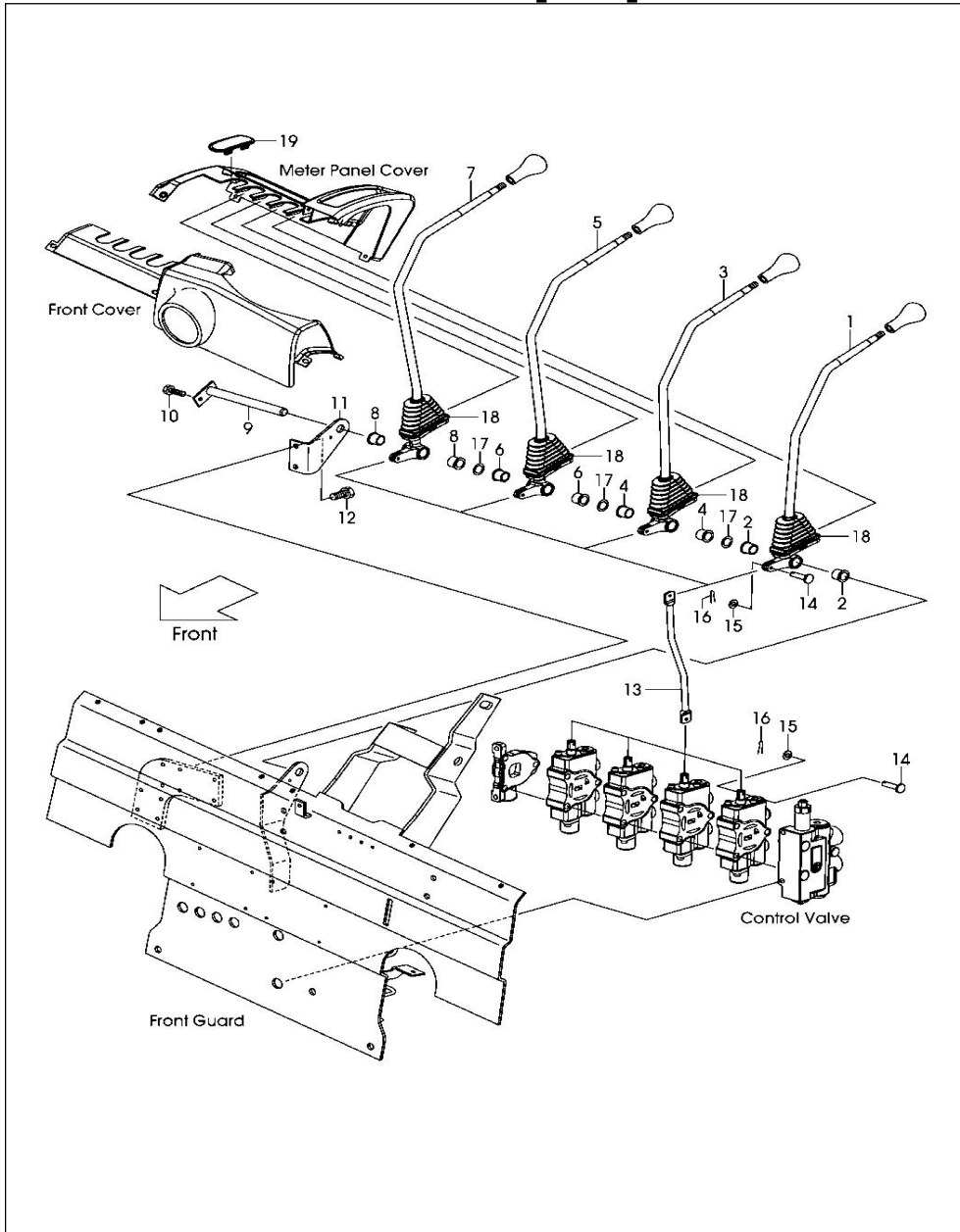
Item No	Part No.	Mark	Description	Req'd	Remarks: Serial No.
A1	2CN57-40011		Lift lever ASSY	1	INC. 1~2
1	2CN57-40101	#	Lift lever	1	
2	214A7-42071		Bushing	2	
A2	2CN57-40021		Tilt lever ASSY	1	INC. 3~4
3	2CN57-40201	#	Tilt lever	1	
4	214A7-42071		Bushing	2	
5	23647-40041		Shaft	1	
6	01183-06012		Bolt	1	
7	22N57-42001		Valve lever bracket	1	
8	01183-08012		Bolt	2	
9	C77J5-73101		Joint	2	
10	22717-40061		Clevis Pin	4	
11	02000-00005		Washer	4	
12	02200-16010		Cotter pin	4	
13	22517-40051		Shim, T-0.2	3	
14	22N57-42151		Valve stem protective sleeve	2	
15	22N57-42161		Valve lever cover	3	

FIG.52 VALVE CONTROL [3SV] 1/2



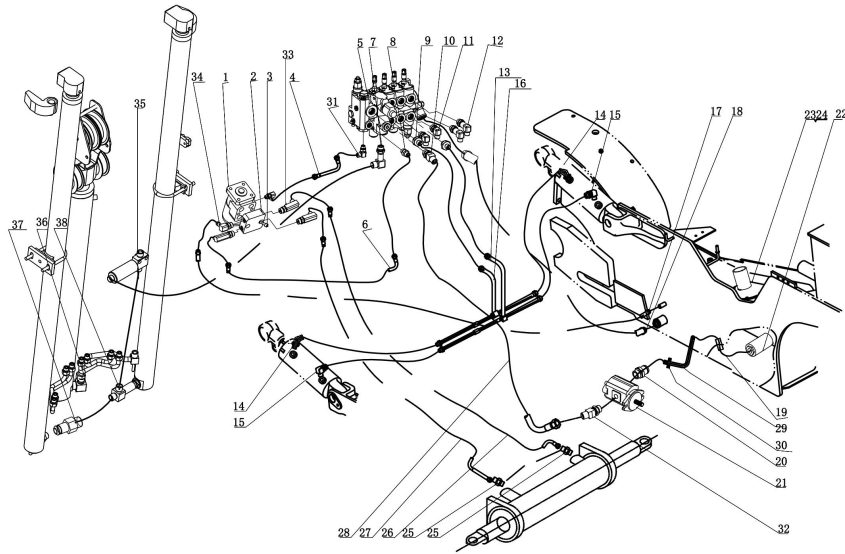
Item No	Part No.	Mark	Description	Req'd	Remarks: Serial No.
A1	2CN57-40011		Lift lever ASSY	1	[3SV] INC. 1~2
1	2CN57-40101.	#	Lift lever	1	[3SV]
2	214A7-42071		Bushing	2	[3SV]
A2	2CN57-40021		Tilt lever ASSY	1	[3SV] INC. 3~4
3	2CN57-40201	#	Tilt lever	1	[3SV]
4	214A7-42071		Bushing	2	[3SV]
A3	2CN57-40031		3 rd lever ASSY	1	[3SV] INC. 5~6
5	2CN57-40301	#	3 rd lever	1	[3SV]
6	214A7-42071		Bushing	2	[3SV]
7	23457-42041		shaft	1	[3SV]
8	01183-06012		Bolt	1	[3SV]
9	22N57-42001		Valve lever bracket	1	[3SV]
10	01183-08012		Bolt	2	[3SV]
11	23657-42131		Spacer sleeve	1	[3SV]
12	C77J5-73101		Joint	3	[3SV]
13	22717-40061		Clevis pin	6	[3SV]
14	02000-00005		Washer	6	[3SV]
15	02200-16010		Cotter pin	6	[3SV]
16	22517-40051		Shim, T-0.2	6	[3SV]
17	22N57-42151		Boot	3	[3SV]

FIG.53 VALVE CONTROL [4SV] 1/2



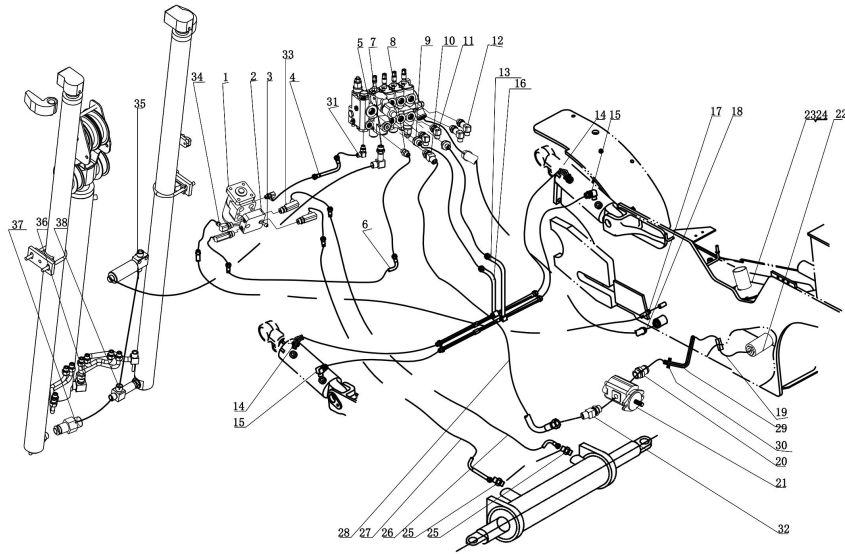
Item No	Part No.	Mark	Description	Req'd	Remarks: Serial No.
A1	2CN57-40011		Lift lever ASSY	1	[4SV] INC. 1~2
1	2CN57-40101	#	Lift lever	1	[4SV]
2	214A7-42071		Bushing	2	[4SV]
A2	2CN57-40021		Tilt lever ASSY	1	[4SV] INC. 3~4
3	2CN57-40201	#	Tilt lever	1	[4SV]
4	214A7-42071		Bushing	2	[4SV]
A3	2CN57-40031		3 rd lever ASSY	1	[4SV] INC. 5~6
5	2CN57-40301	#	3 rd lever	1	[4SV]
6	214A7-42071		Bushing	2	[4SV]
A4	2CN57-40041		4 th lever ASSY	1	[4SV] INC. 7~8
7	2CN57-40401	#	4 th lever	1	[4SV]
8	214A7-42071		Bushing	2	[4SV]
9	23457-42041		Shaft	1	[4SV]
10	01183-06012		Bolt	1	[4SV]
11	CD301YB-Y2003		Valve lever bracket	1	[4SV]
12	01183-08012		Bolt	2	[4SV]
13	C77J5-73101		Joint	4	[4SV]
14	22717-40061		Clevis pin	8	[4SV]
15	02000-00005		Washer	8	[4SV]
16	02200-16010		Cotter pin	8	[4SV]

FIG.56 HYDRAULIC PIPELINE 1/2



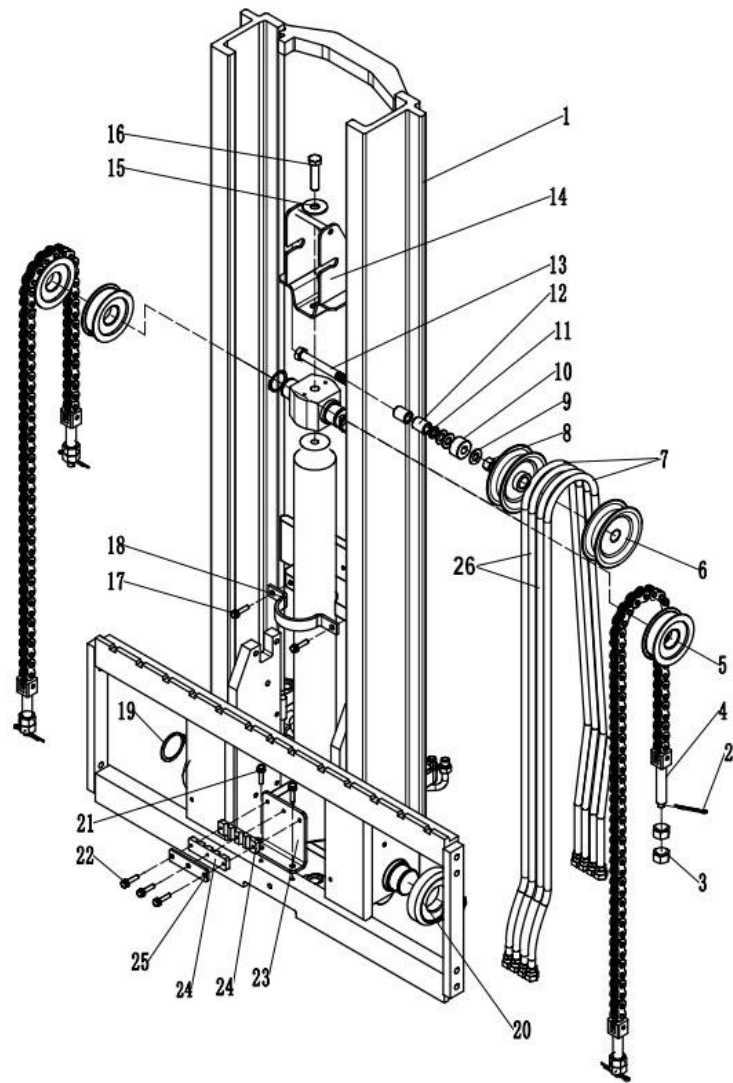
Item No	Part No.	Mark	Description	Req'd	Remarks: Serial No.
1	BHR5-125-Y01-PC		Deflector	1	
2	C77J4-10201		Link block	1	
3	90-003-012-		Bolt	2	
4	GJ061-0530W		High pressure hose	1	
5	CDB3-F15DEY-04A		Multi-way valve	1	
6	GJ081-0700W		High pressure hose	1	
7	C73E7-70241M		Right angle joint	1	
8	T30-19		Oil inlet connection	2	
9	277H7-60601M		Straight joint	2	
10	216M7-32101M		Straight joint	1	
11	C73E7-70331M		Straight joint	2	
12	C73E7-70341		Straight joint	2	
13	2CN57-62452D		Composite steel pipe	1	
14	GJT-399-00		Tilting cylinder joint	2	
15	C91J7-70651		Tilting cylinder joint	4	
16	2CN57-62404D		Composite steel pipe	1	
17	C73E7-73111		Steering gear return tubing	1	
18	C77J7-73021		Multi-way valve return line	1	
19	C77J7-73001		Oil suction tube	1	
20	C91J7-76001		Gear pump inlet connector	1	

FIG.56 HYDRAULIC PIPELINE 2/2



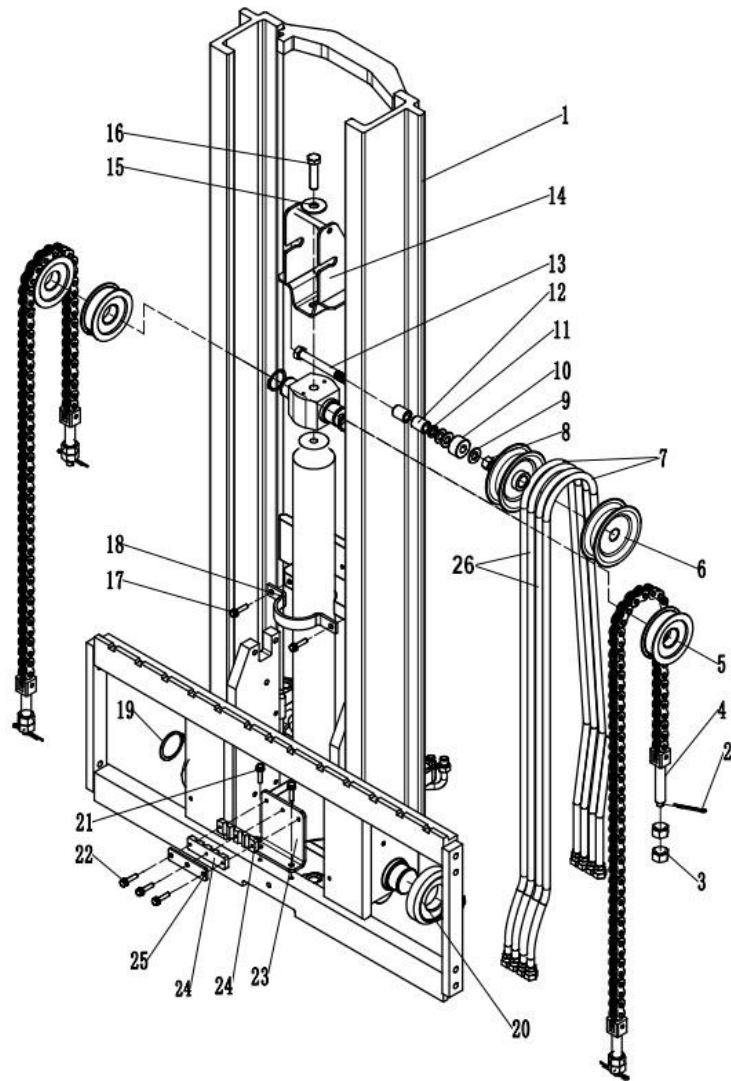
Item No	Part No.	Mark	Description	Req'd	Remarks: Serial No.
21	TMG1A23A1H7-R		Gear pump	1	
22	271A7-52301B		Hydraulic oil filter element	1	
23	C77J7-70201		Hydraulic tank cover plate	1	
24	22N57-52311a		Gasket	1	
25	C91J7-70691		Rear axle joint	2	
26	GJ101-2660		High pressure hose	1	
27	GJ101-2560		High pressure hose	1	
28	GJG131-2000		High pressure hose	1	
29	C77J7-73031		Oil suction tube	1	
30	C77J7-73041		Oil suction tube	1	
31	GJT-012-02		Straight joint	1	
32	C91J7-76011		Oil pump inlet connection	1	
33	C77J4-10201		Elbow joint	3	
34	C77J4-10202		Elbow joint	1	
35	C91J8-00701		T- joint	1	
36	RH30-33		Elbow joint	1	
37	C91J8-00731		Elbow joint	1	
38	C91J8-22661		T- Joint	1	

FIG.64 MAST 1/3



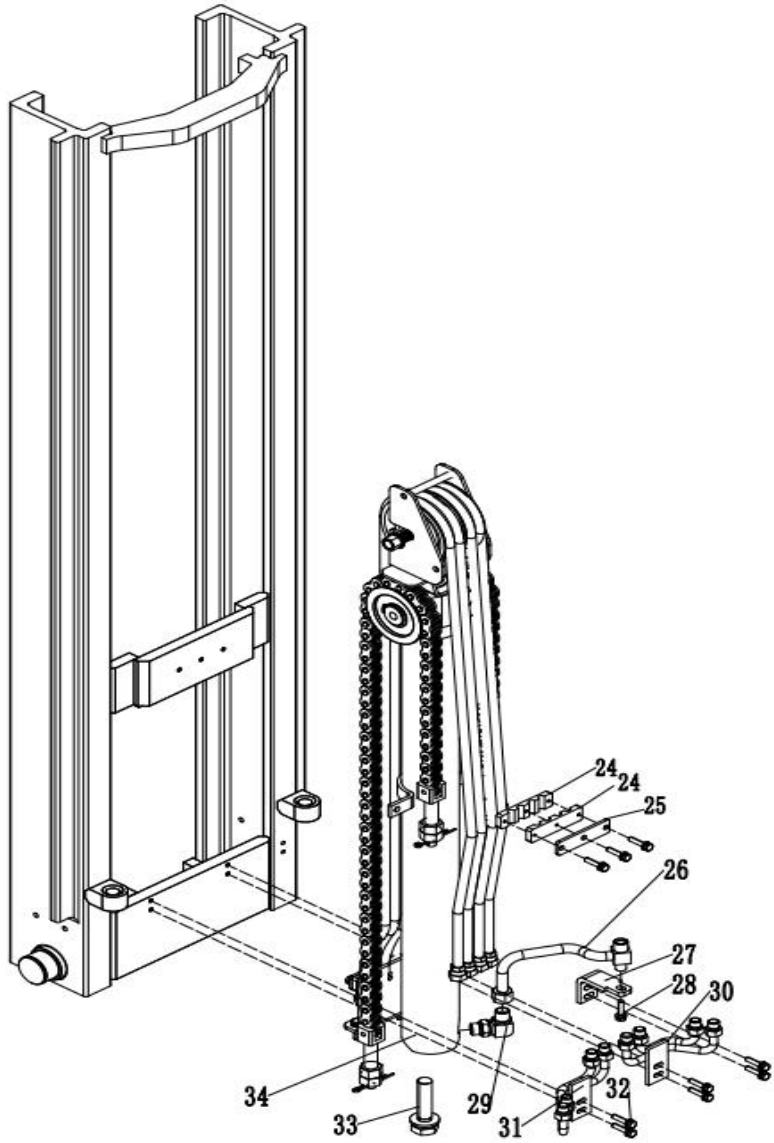
Item No	Part No.	Mark	Description	Req'd	Remarks: Serial No.
1	C73E8-2XL07H-00		Inner mast	1	
2	02200-03030		Pin	4	
3	22218-40191		Nut	4	
4	ZLH1623-065		Chain ASSY	2	
5	234A8-43501		Sheave	2	
6	62170-12731		Pulley	2	
7	GJ082-3250CY		High pressure hose	2	
8	WL-B4233-00016		Hexagon nut	1	
9	WL-B5310-00016		Flat gasket	3	
10	FH86-86		Spacer sleeve	5	
11	02011-00016		Washer	1	
12	FH87-87		Spacer sleeve	2	
13	WL-B0420-16070		Hexagon bolt M16X70	1	
14	C24K8-20801		Pulley support	1	
15	WL-GB9316		Spring washer	1	
16	01103-10016		Bolt	2	
17	01103-10010		Bolt	2	
18	C25K8-23011		Front cylinder retaining clip (YNMT)	1	
19	DQA-58		Clip retaining ring	8	
20	ZC-980811NT		Composite roller	4	

FIG.64 MAST 2/3



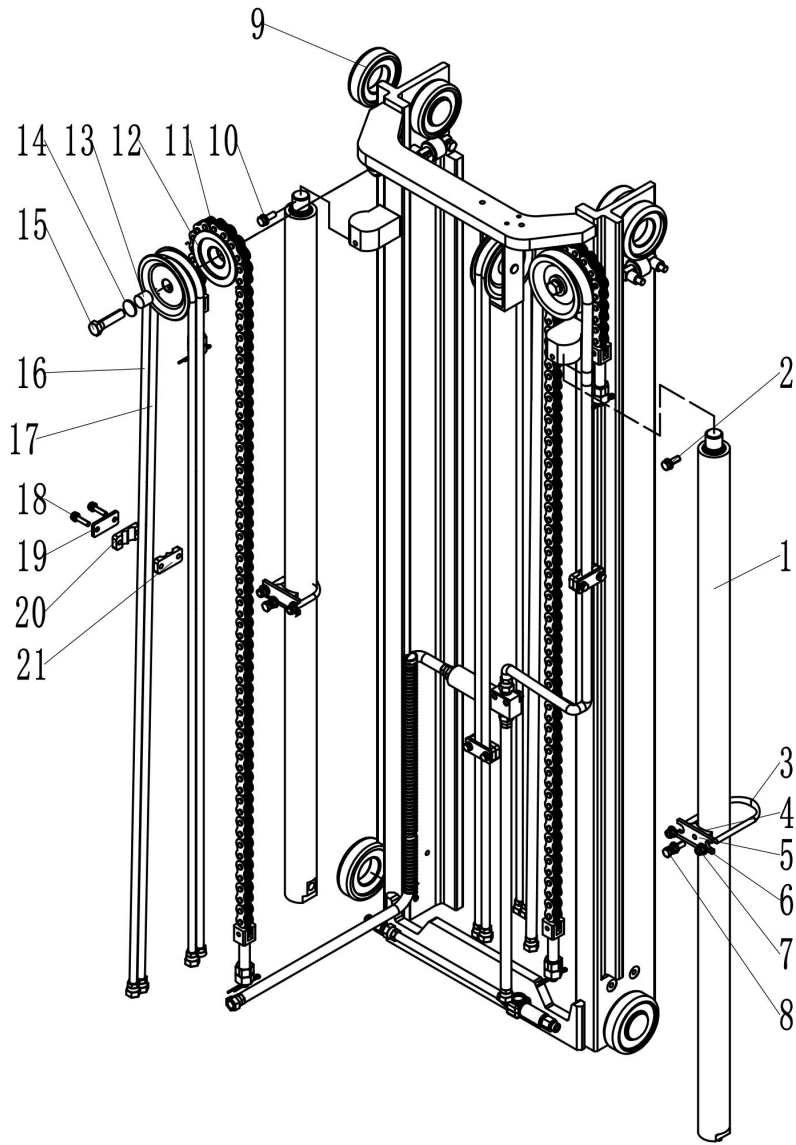
Item No	Part No.	Mark	Description	Req'd	Remarks: Serial No.
21	B0220-08020		Bolt	2	
22	B0220-08035		Bolt	6	
23	C24K8-21701H		Fixed plate	1	
24	C24K8-21712H		Pipe clamp	4	
25	C24K8-21711H		Pipe clamp	2	
1-1	C22F8-20501H		Inner mast ASSY 3600	2	2-2.5T
	C22F8-20511H		Inner mast ASSY 4000	2	
	C22F8-20521H		Inner mast ASSY 4350	2	
	C22F8-20531H		Inner mast ASSY 4800	2	
	C22F8-20541H		Inner mast ASSY 5000	2	
	C22F8-20561H		Inner mastASSY 5500	2	
	C22F8-20571H		Inner mast ASSY 6000	2	
	C22F8-20581H		Inner mast ASSY 4500	2	

FIG.65 LIFT CYLINDER (FRONT) 2/2



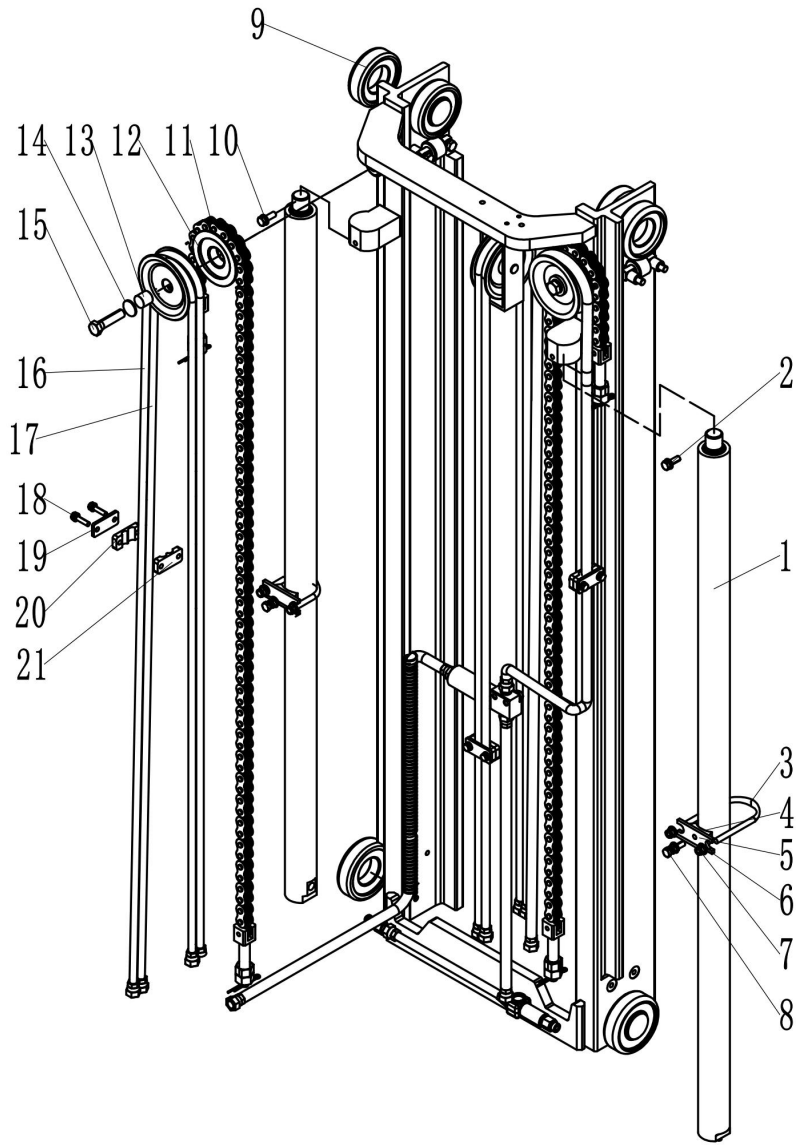
Item No	Part No.	Mark	Description	Req'd	Remarks: Serial No.	
34	CT212YO-80451		Front cylinder 3600	1	2-2.5T	
	CT212YO-80461		Front cylinder 4000	1		
	CT212YO-80481		Front cylinder 4350	1		
	CT212YO-80491		Front cylinder 4500	1		
	CT212YO-80501		Front cylinder 4800	1		
	CT212YO-80511		Front cylinder 5000	1		
	CT212YO-80521		Front cylinder 5500	1		
	CT212YO-80531		Front cylinder 6000	1		
	CT212TO-80451		Front cylinder 3600	1		3-3.5T
	CT212TO-80461		Front cylinder 4000	1		
	CT212TO-80481		Front cylinder 4350	1		
	CT212TO-80491		Front cylinder 4500	1		
	CT212TO-80501		Front cylinder 4800	1		
	CT212TO-80511		Front cylinder 5000	1		
	CT212TO-80521		Front cylinder 5500	1		
	CT212TO-80531		Front cylinder 6000	1		

FIG.66 LIFT CYLINDER (REAR) 1/3



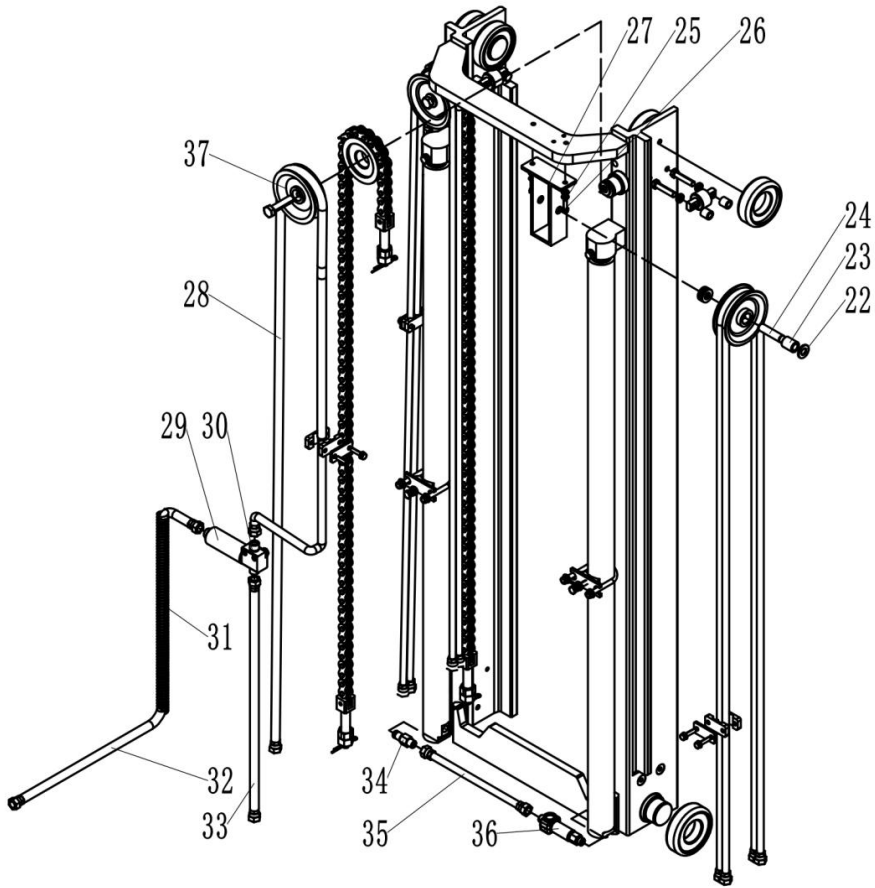
Item No	Part No.	Mark	Description	Req'd	Remarks: Serial No.
1-1	C22F8-20401		Rear lift cylinder ASSY 3600	1	2-2.5T
	C22F8-20411		Rear lift cylinder ASSY 4000	1	
	C22F8-20431		Rear lift cylinder ASSY 4350	1	
	C22F8-20441		Rear lift cylinder ASSY 4500	1	
	C22F8-20451		Rear lift cylinder ASSY 4800	1	
	C22F8-20461		Rear lift cylinder ASSY 5000	1	
	C22F8-20471		Rear lift cylinder ASSY 5500	1	
	C22F8-20481		Rear lift cylinder ASSY 6000	1	
1-2	C24k8-20401		Rear lift cylinder ASSY 3600	1	3-3.5T
	C24k8-20411		Rear lift cylinder ASSY 4000	1	
	C24k8-20431		Rear lift cylinder ASSY 4350	1	
	C24k8-20441		Rear lift cylinder ASSY 4500	1	
	C24k8-20451		Rear lift cylinder ASSY 4800	1	
	C24k8-20461		Rear lift cylinder ASSY 5000	1	
	C24k8-20471		Rear lift cylinder ASSY 5500	1	
	C24k8-20481		Rear lift cylinder ASSY 6000	1	
2	02000-20010		Washer	4	
3	D20B8-42061		U clamp	2	
4	01402-00010		Cylinder support block	2	
5	01120-10030		Cylinder retaining plate	2	

FIG.66 LIFT CYLINDER (REAR) 2/3



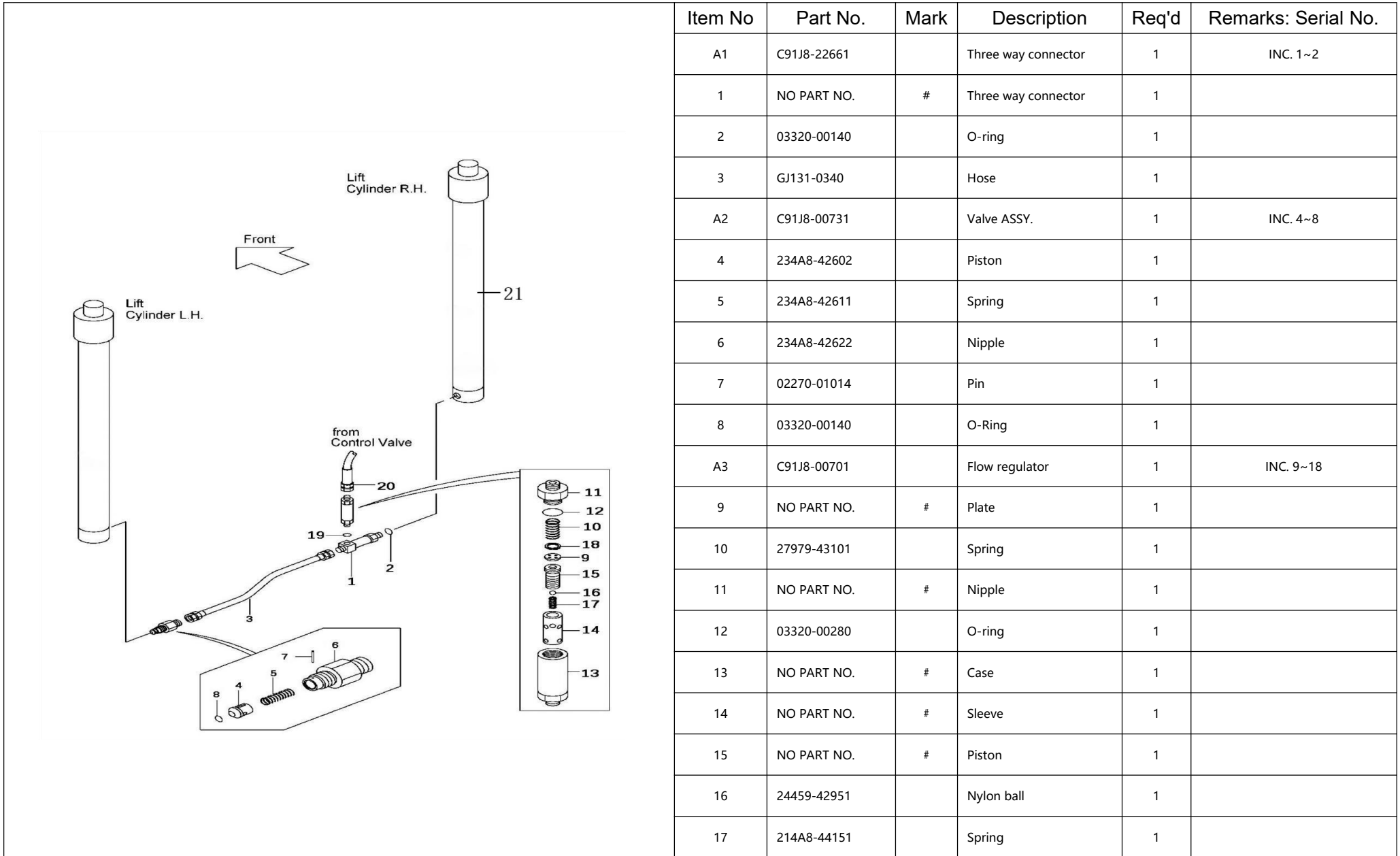
Item No	Part No.	Mark	Description	Req'd	Remarks: Serial No.
6	22N58-43011		Support	2	
7	22N58-43811		Shim, T-0.5	4	
8	234A8-42551		Bolt	2	
9	ZC-980811NT		Main roller	10	
10	02000-20010		Washer	4	
11	ZLH1623-079		Chain ASSY	2	
12	ZC-780708K		Sprocket wheel	4	
13	C23F8-20311		Middle mast VFHM	1	
14	62050-12331		Spacer	2	
15	62170-12731		Bolt	6	
16	GJ081-3900		High pressure hose	1	
17	GJ081-3950		High pressure hose	1	
18	B0220-08030		Bolt	4	
19	C24K8-21701H		Fixed plate	4	
20	C24K8-21731		Rubber pipe clip	4	
21	C24K8-21741		Rubber pipe clip	4	

FIG.67 LIFT CYLINDER (REAR) 3/3



Item No	Part No.	Mark	Description	Req'd	Remarks: Serial No.
22	90-092-016-10		gasket	4	
23	C24K8-21401		Spacer sleeve	2	
24	2CN58-52301		pin	2	
25	90-092-010-10		gasket	4	
26	WL-B0220-08040		bolt	2	
27	C24K8-20813		Pulley support	1	
28	GJ131-3200		High pressure hose	1	
29	C91J8-00701		Governor valve	1	
30	C91J8-22661		THREE-WAY-ASSY	1	
31	23657-42131A		Spacer sleeve	1	
32	GJ131-0880WGS		High pressure hose	1	
33	GJ131-0540		High pressure hose	1	
34	C91J8-00731		Shutoff valve	1	
35	GJ131-0340		High pressure hose	1	
36	C24K8-23161		THREE-WAY-ASSY	1	

FIG.68 MAST PIPING 1/2



Item No	Part No.	Mark	Description	Req'd	Remarks: Serial No.
A1	C91J8-22661		Three way connector	1	INC. 1~2
1	NO PART NO.	#	Three way connector	1	
2	03320-00140		O-ring	1	
3	GJ131-0340		Hose	1	
A2	C91J8-00731		Valve ASSY.	1	INC. 4~8
4	234A8-42602		Piston	1	
5	234A8-42611		Spring	1	
6	234A8-42622		Nipple	1	
7	02270-01014		Pin	1	
8	03320-00140		O-Ring	1	
A3	C91J8-00701		Flow regulator	1	INC. 9~18
9	NO PART NO.	#	Plate	1	
10	27979-43101		Spring	1	
11	NO PART NO.	#	Nipple	1	
12	03320-00280		O-ring	1	
13	NO PART NO.	#	Case	1	
14	NO PART NO.	#	Sleeve	1	
15	NO PART NO.	#	Piston	1	
16	24459-42951		Nylon ball	1	
17	214A8-44151		Spring	1	

FIG.68 MAST PIPING 2/2

Item No	Part No.	Mark	Description	Req'd	Remarks: Serial No.	
18	02110-00018		Snap ring	1		
19	03320-00180		O-ring, M22*1.5	1		
20	GJ131-0540		Hose	1		
21	C22F8-22101		Side casing 3600	2	2T~2.5T	
	C22F8-22111		Side casing 4000	2		
	C22F8-22131		Side casing 4350	2		
	C22F8-22141		Side casing 4500	2		
	C22F8-22151		Side casing 4800	2		
	C22F8-22161		Side casing 5000	2		
	C22F8-22171		Side casing 5500	2		
	C22F8-22181		Side casing 6000	2		
	C24K8-21101		Side casing 3600	2		3T~3.5T
	C24K8-21111		Side casing 4000	2		
C24K8-21131		Side casing 4350	2			
C24K8-21141		Side casing 4500	2			
C24K8-21151		Side casing 4800	2			
C24K8-21161		Side casing 5000	2			
C24K8-21171		Side casing 5500	2			
C24K8-21181		Side casing 6000	2			

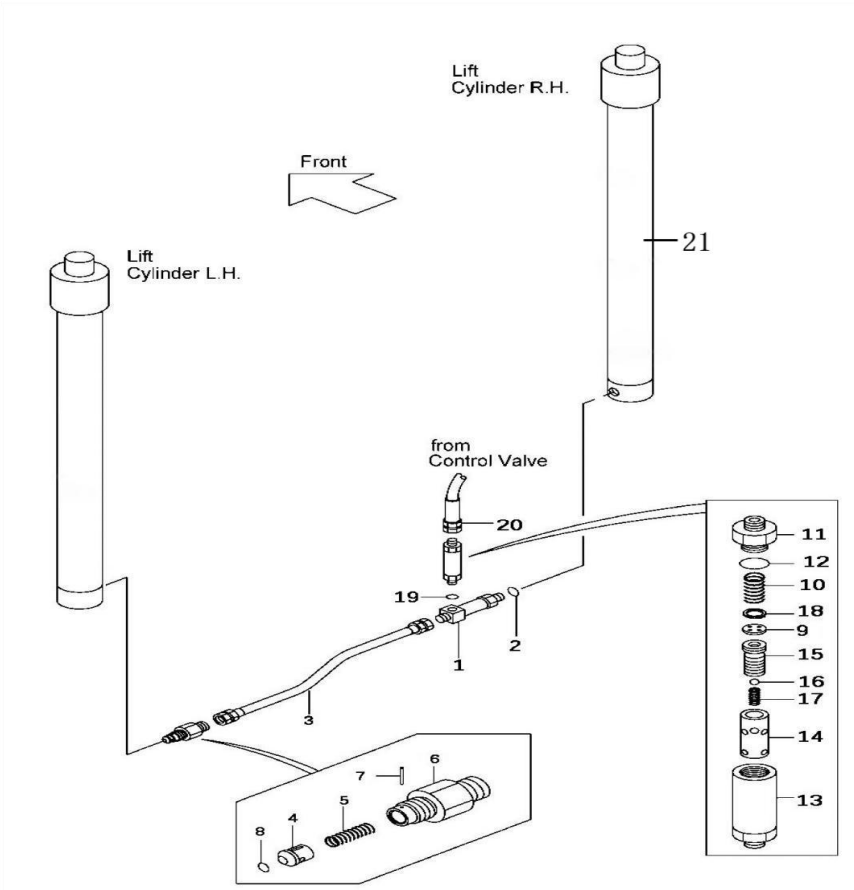
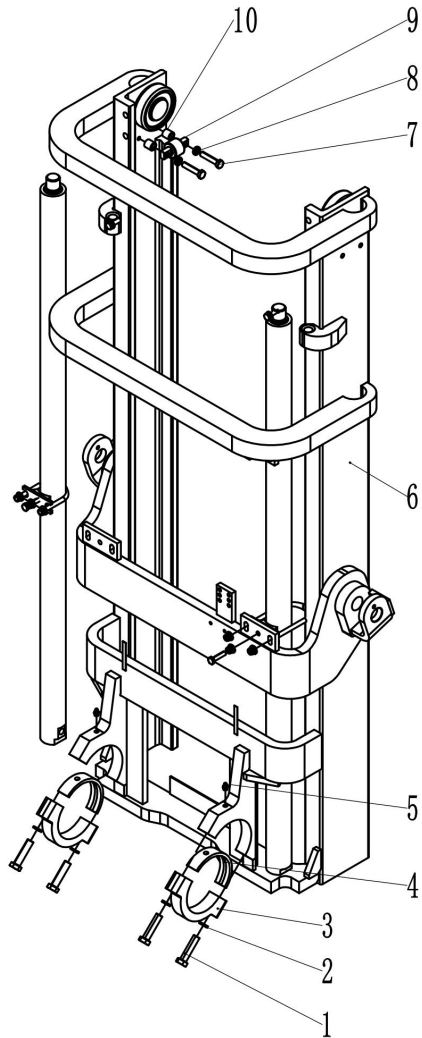
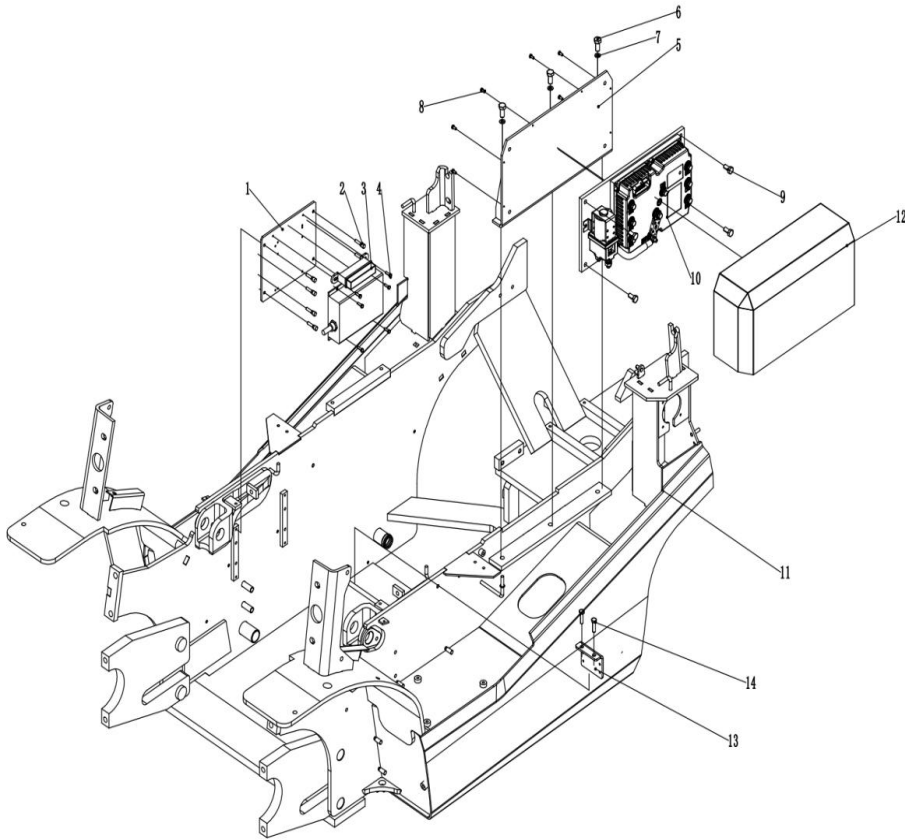


FIG.69 OUTER MAST 1/2



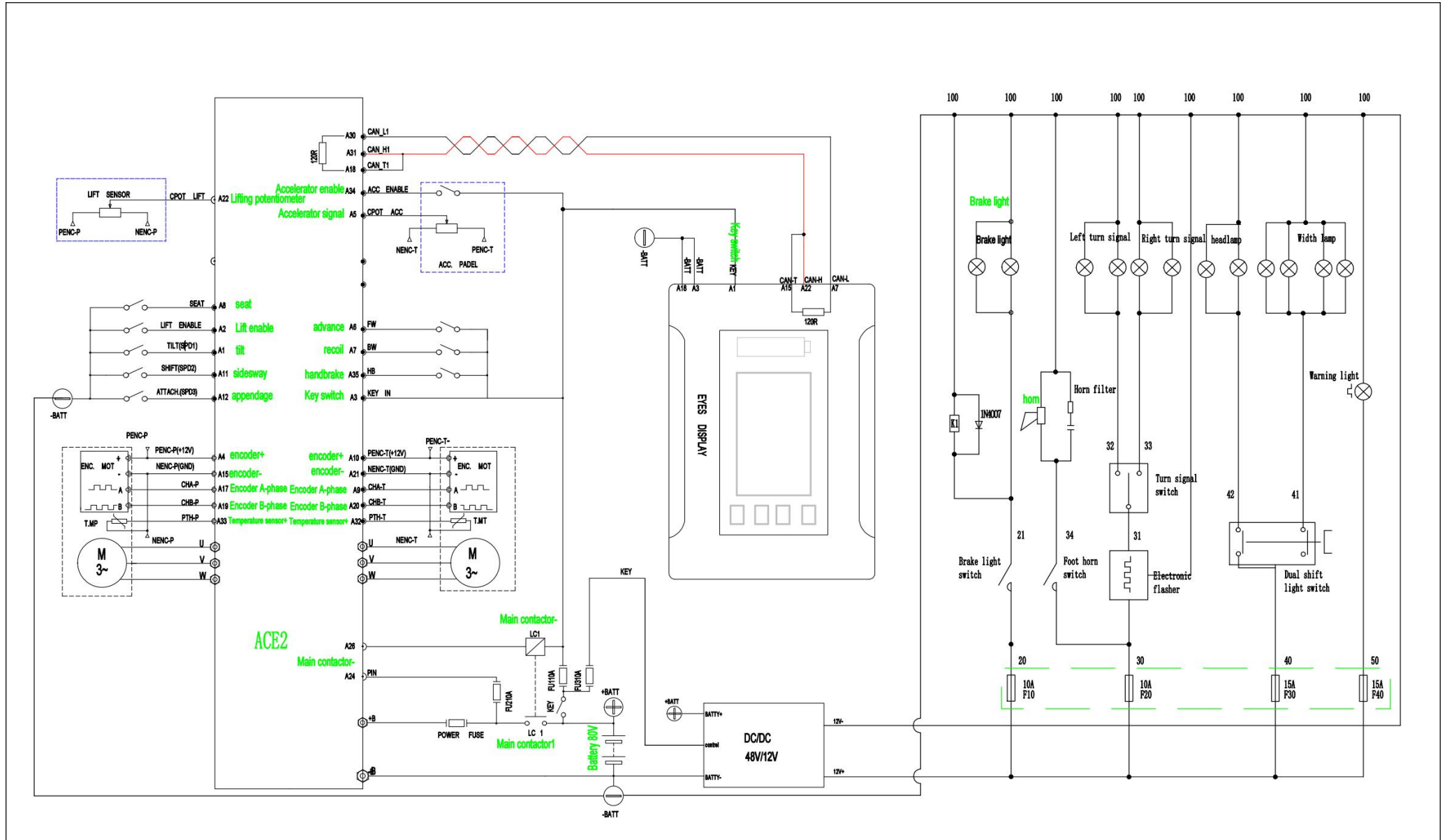
Item No	Part No.	Mark	Description	Req'd	Remarks: Serial No.
1	01103-16065		Bolt	4	
2	02011-00016		Washer	4	
3	C91J8-02001		Cap	2	
4	C91J9-02001		Bushing	2	
5	04901-00100		Fitting	2	
6	C22F820201H		Outer frame ASSY 3600	2	2T-2.5T
	C22F820211H		Outer frame ASSY 4000	2	
	C22F820221H		Outer frame ASSY 4350	2	
	C22F820231H		Outer frame ASSY 4800	2	
	C22F820241H		Outer frame ASSY 5000	2	
	C22F820251H		Outer frame ASSY 5400	2	
	C22F820261H		Outer frame ASSY 5500	2	
	C22F820271H		Outer frame ASSY 6000	2	
	C22F820281H		Outer frame ASSY 4500	2	3T-3.5T
	C24K8-20201H		Outer frame ASSY 3600	2	
	C24K8-20211H		Outer frame ASSY 4000	2	
	C24K8-20221H		Outer frame ASSY 4350	2	
	C24K8-20231H		Outer frame ASSY 4800	2	
	C24K8-20241H		Outer frame ASSY 5000	2	
C24K8-20251H		Outer frame ASSY 5400	2		

FIG.70 ELECTRONIC DEVICE



Item No	Part No.	Mark	Description	Req'd	Remarks: Serial No.
1	C73E2-40381		Converter mounting plate	1	
2	CKM01-25101		Step bolt	8	
3	FB-500-005-10		Fuse box	1	
4	WL-B0220-05016		Bolt M5*16	6	
5	C77J2-40121		Controller mounting plate welded	1	
6	WL-B0240-12025		Bolt M12*25	3	
7	WL-GB96012		gasket	3	
8	WL-B0220-05020		Bolt, M8*20	6	
9	WL-B0240-10020		Bolt, M10*20	4	
10	FB30-500-200-10		Controller panel	1	
11	C77J6-10201		Chassis 3T-3.5T	1	
	C77J6-11201		Chassis 2T-2.5T	1	
12	C77J2-42071		Shield	1	
13	C77J2-42041		Connector fixing plate	1	
14	WL-B0220-08030		Bolt, M8*30	2	

FIG.73 ELECTRIC CONTROL SCHEMATIC



ISSUED: OCT., 2023

All rights reserved